

lighting today

JULY - SEPTEMBER 2019

COVER STORY

Fairmont The Queen Elizabeth

Montreal, Quebec



Scan to visit
our website



“The **Best Choice of LED**”

90% energy saving

- ✓ long life 25,000hrs.
- ✓ no UV
- ✓ eco friendly
- ✓ save money

Lighting & Equipment Public Company Limited
539/2, 16-17th FL., Gypsum Metropolitan Tower, Sri Ayudhaya Rd.,
Rajtheevee, Bangkok 10400, Tel : (66) 0 2248 8133, www.lighting.co.th

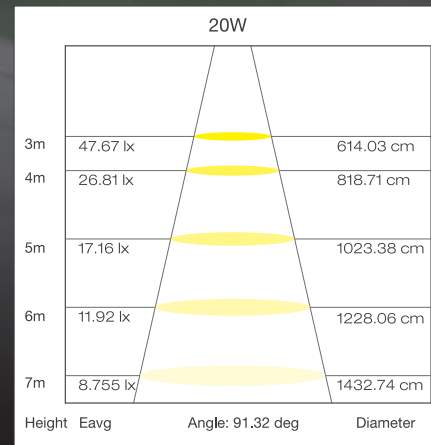
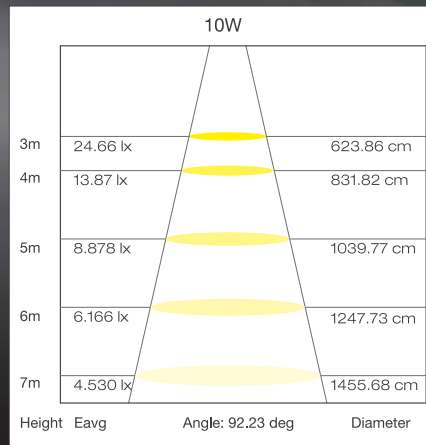




SOLAR POWER SYSTEM

Yaham Edge solar LED street light, its small wattages are suitable for rural roads, off-grid area lighting, with 100% sun power and without extra mains electricity. All-in-one Solar LED street light is a cost-effective and durable certification solutions for kinds of street at night.

- **Rated Wattage:** 10W/20W
- **High Efficiency:** up to 180lm/W
- **Battery:** LiFePO₄
- **Mono solar panel efficiency up to 18%**
- **Recommended Pole Height:** 3-6 Meters



**Hong Kong International Lighting Fair
(Autumn Edition)**

Oct.27th-30th, 2019



**Hong Kong International Outdoor and
Tech Light Expo 2019**

Oct.29th-Nov.1st, 2019

**YAHAM[®]
Lighting**

+86-755-2943 5812 sales@yahamlighting.com

f / t / in : YAHAM Lighting yahamlighting.com



PUBLISHER
Steven Ooi steven.ooi@tradelinkmedia.com.sg

EDITOR
Kimberly Tan lighting@tradelinkmedia.com.sg

MARKETING EXECUTIVE
Veronica Lim veronica.lim@tradelinkmedia.com.sg

GROUP MARKETING MANAGER
Eric Ooi eric.ooi@tradelinkmedia.com.sg

MARKETING MANAGER
Felix Ooi felix.ooi@tradelinkmedia.com.sg

GRAPHIC DESIGNER
Siti Nur Aishah siti@tradelinkmedia.com.sg

HEAD OF GRAPHIC DEPT/ADVERTISEMENT COORDINATOR
Fawzeeah Yamin fawzeeah@tradelinkmedia.com.sg

CIRCULATIONS EXECUTIVE
Yvonne Ooi yvonne.ooi@tradelinkmedia.com.sg

INTERNATIONAL MEDIA REPRESENTATIVES

[KOREA]

MCI
 Room B615, Hanwha Obelisk 2,
 481, World Cup buk-ro,
 Mapo-gu, Seoul,
 Korea 03902
 t. +82 2 730 1234 f. +82 2 732 8899

CALL FOR SUBMISSIONS

Press releases, proposals for stories, and product development literature should be submitted by email to the editor at:

lighting@tradelinkmedia.com.sg

LIGHTING TODAY IS PUBLISHED BY:

TRADE LINK MEDIA PTE LTD
 101 Lorong 23, Geylang #06-04
 Prosper House Singapore 388399

For interest in advertising and advertorials, please attention your query via:
 fax: +65 6842 2581 / +65 6745 9517 or
 direct call: +65 6842 2580

Printed by Refine Printing Pte Ltd
 MCI (P) 095/05/2019
 ISSN 2345-7147 (Print) and ISSN 2345-7155 (E-periodical)

This publication is published four times a year and is available at no charge to subscribers in the professional lighting industry who meet the publication's terms of circulations control. For subscribers who do not qualify for free subscription, copies will be made available subject to acceptance by the publisher, for a subscription fee which varies with the requester's country of residence in the following rate for annual subscription.

ANNUAL SUBSCRIPTION BY AIRMAIL

Europe/America – SGD\$130,
 Asia Pacific – SGD\$80,
 Brunei/Malaysia – SGD\$65,
 Middle East – SGD\$130,
 Japan/Australia/New Zealand – SGD\$130

ANNUAL SUBSCRIPTION BY SURFACE MAIL

Singapore – SGD\$32 (Incl 7% GST Reg No.: M2-0108708-2)

On the Cover: Fairmont The Queen Elizabeth
 Montreal, Quebec

Photo Credit: Stéphane Brügger

OTHER TITLES BY TRADE LINK MEDIA PTE LTD

**Southeast Asia Building · Southeast Asia Construction
 Security Solutions Today · Bathroom + Kitchen Today**

www.tradelinkmedia.biz

DISCLAIMER!

All advertisers and contributors must ensure all promotional material and editorial information submitted for all our publications, must be free from any infringement on patent rights, copyrights laws in every jurisdiction. Failure of which, they must be fully liable and accountable for legal consequences (if any) that may arise.

The editor reserves all right to omit, amend or alter press releases submitted for publication. The publisher and editor are unable to accept any liability for errors or omissions that may occur in this process, although every effort has been taken to ensure that all information is correct at the time of going to press. Edited articles or stories are returned to contributors for check on facts at the sole discretion of the editor. No portion of this publication may be reproduced in whole or part without written permission of the publisher. The editor reserves all rights to exclude or refuse submissions at any time without prior written or verbal notice if contributing parties do not provide complete text and supporting images at a minimum of 300 dpi in .jpeg and .tiff format.



Japan's LARGEST* trade show for the live & entertainment industry
with 650** exhibitors and 30,000** visitors



7th Live Entertainment Expo TOKYO

Pro-lighting, Pro-audio and LED Display

Dates: Feb. 5 [Wed] – 7 [Fri], 2020

Venue: Makuhari Messe, Japan

Organised by: Reed Exhibitions Japan Ltd.

Concurrent show: 7th Events & Amusement Expo TOKYO

3rd Sports Business Expo TOKYO

3rd Local Value Creation Expo

**LARGEST* in reference to the exhibitor number and the net exhibit space of trade shows with the same concept. **expected, including concurrent shows.

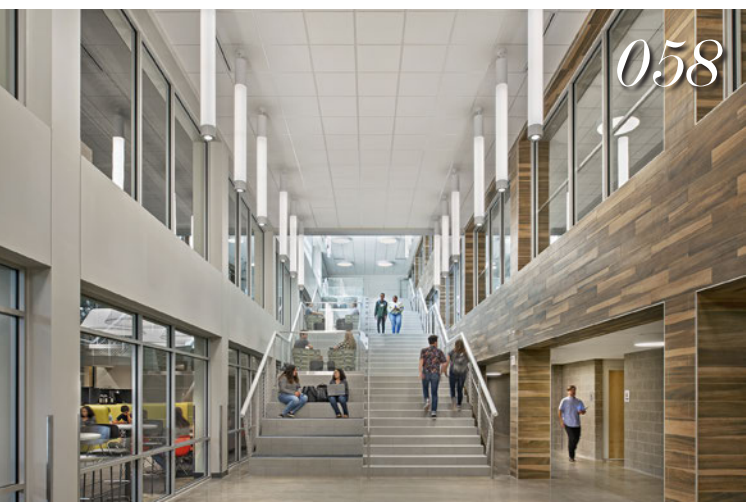
Contact now for EXHIBITING

>> www.live-event.jp/ex_en/

Organised by

 Reed Exhibitions

Organiser: Reed Exhibitions Japan Ltd. Live Entertainment Expo TOKYO Show Management
18F Shinjuku-Nomura Bldg., 1-26-2 Nishishinjuku, Shinjuku-ku, Tokyo 163-0570, Japan
TEL: +81-3-3349-8510 E-mail: live-expo.eng@reedexpo.co.jp
A division of Reed Business Registered in England, Number 678540



Contents

008	Light Talk by Martin Klaasen
010	Lighting in the News
030	Show Preview <ul style="list-style-type: none"> • GILE 2019 • RiX 2019
034	Show Review <ul style="list-style-type: none"> • Prolight + Sound 2019
036	Special Feature <ul style="list-style-type: none"> • A Festival in Light: Parrtjima • Sook Siam
042	Smart Lighting <ul style="list-style-type: none"> • Versatile and Smart Office Lights by Erco
044	Cover Story <i>Fairmont The Queen Elizabeth</i>
050	Lighting Façades and Landscapes <ul style="list-style-type: none"> • 1411 Crescent Street • Tilburg Bus Station
058	Lighting Spatial Envelopes <ul style="list-style-type: none"> • Oakland University Oakcrest Hall • Bellas Artes Outpost • Exploration Center of Rivière-des-Mille-Îles Park
069	Lighting Controls <ul style="list-style-type: none"> • SOSEN LED Driver
070	illumina Product Showcase <ul style="list-style-type: none"> • Luxury Lighting Design by Castro Lighting • Outdoor Lighting by Yaham Lighting
076	Product Focus Exterior / Interior
080	Events & Expositions / Advertisers Index

L SERIES

- 120-277Vac; 36-100W
- TUV/UL/CB/Class P certified
- 6kV/4kV and 10kV/6kV surge protection optional
- 3-in-1 isolated dimming
- IP42, 5 years warranty
- Class 2



CB CE

Stock Code: 871785



SHENZHEN SOSEN ELECTRONICS CO.,LTD.

Add: A3 Building, Gonghe Fourth Industrial Area, Shajing Street, Bao'an District, Shenzhen China

Tel: 86-755-23150729

E-mail: info@szsosen.com

Dear Readers,

Time sure passes quickly. As mentioned in the previous issues, Lighting Today will be going fully digital next year. Our next issue will be our final print issue, so do scan the QR code on the cover page to check out our website! Alternatively, you can also check out our Facebook page for the latest lighting news.

In this issue, we explore lighting projects in everyday places – do check out the full cover story of Fairmont The Queen Elizabeth Hotel, Montreal as well as the feature on Sook Siam in Bangkok! Inside there's also a special feature of Partjima, A Festival in Light that celebrates Australian Indigenous Culture. Read on to find out more!

Have something lighting related to share? Send it to our email! We would love to feature projects and submissions from our loyal readers. Till then, happy reading!

Kimberly Tan

Kimberly Tan
Editor



TRANSFORMING the Way We BUILD

3 – 6 SEPTEMBER 2019

SANDS EXPO & CONVENTION CENTRE
SINGAPORE

The International Built Environment Week (IBEW) is the first fully-integrated event in the Asia Pacific covering the entire lifecycle of the built environment and value chain. Join 12,000 other global professionals and leaders from the built environment sector as they converge at the IBEW to exchange ideas and experiences, widen business networks and discover new opportunities.

Highlights



The Next Wave of
Game Changing
Innovations



Making
Zero Energy
Buildings Work



Modernising Construction
with Design for
Manufacturing and Assembly



Gaining Competitive
Advantage through Integrated
Digital Delivery



Improving Liveability
through Greener &
Healthier Spaces



Smart Facilities
Management – The
Next Frontier of
Smarter Buildings

IBEW 2019 Speakers include:



**DR. AYESHA
KHANNA**
ADDO AI



**MR. CHENG
HSING YAO**
Guocoland



**DR. CHRIS
LUEBKEMAN**
Arup



DR. YIBO XU
Stefano Boeri
Architetti China



**MR. WONG
HEANG FINE**
Surbana Jurong



**DR. THOMAS
LIEBICH**
AEC3 Deutschland
GmbH



**MR. WONG
MUN SUMM**
WOHA Architects



**MR. RON
BAKKER**
PLP Architecture

REGISTER TODAY

Register by **30 June 2019** and enjoy more than **40% discount!**



PREMIUM PASS - All access

\$680

BUSINESS PASS - Access to keynote, plenaries and welcome reception

\$500

DAY PASS - 1 day access to plenary/track sessions on the same day

\$400

Organiser:



An Initiative Under:



IBEW Strategic Partner:



4 Anchor Exhibitions Under IBEW:



Supporting Partners:



LIGHTING DESIGN DISRUPTED

Have we reached a “Kodak moment” in lighting design?

Over the course of the last 1-2 years I have frequently alluded to the changing environment in which we perform our lighting design services. Recent events in my own project activities have reinforced my belief that we are slowly but surely approaching what I would call a Kodak moment in the lighting design profession.

Traditionally we partner with developers, property owners, operators, architects, design professionals, etc and our services are geared around providing good quality lighting design. However, this will be drastically changed courtesy of the smart city - smart building push that drives many cities around the world. Knowledge is power, right? The key to smartness is data collection. This is what is happening right now, right here. The number one decision maker in all new developments is how to incorporate a data collecting infrastructure in our living environment, in our cities, in our buildings.

Data collection happens through sensors, cameras, measuring and communicating devices and these devices will need a place to operate from. In exteriors we see CCTV cameras and other devices/sensors (weather/ air quality/ lighting/ motion/ Wi-Fi/ etc) fixed to building structures and poles. In the interiors we see them mostly crowding our ceilings. The ceilings are the new battle grounds in buildings! Everyone is fighting for a little space in the ceiling specifically because every vendor is out there to capture a slice of the new smart market. At present, this results in ever-increasing siloed solutions – one for each specific data collection need. Just look up when you walk around a shopping mall or at the airport or train station and see how many “unidentified objects” besides lighting you will see!

There is an obvious need to bring all these solutions together and find a common infrastructure that can house and integrate these data platforms. The commonality between all these smart systems is that they all need power to function (replacing batteries is a pain in the long term), a housing for the sensors, a connected infrastructure and an identifiable location. It shouldn't surprise you that lighting is ideally suited to become the number one choice to host these smart infrastructures. Why? First and foremost, there is lighting everywhere people are! Lights are already powered, they have housing integration opportunities (light fitting), the location is known and most lights already have an existing (smart) control system and connectivity.

How would knowing this information affect me as a lighting designer? Well, we still need to design lighting solutions that provide mood and ambience, create comfortable working environments, comply with building codes and lighting standards. Yes, absolutely we do! But the issue here is who will have control over your lighting point? Today the lighting designer is, because the lighting point is 90% about lighting. But tomorrow? In previous articles I have used the mobile phone as a key metaphor to show how technology changes the user needs completely. In the early days the mobile phone was mainly about phoning and texting. Today? Who buys a mobile phone because of its phone capabilities or text functions? It's now all about the smart data features, connectivity and apps...

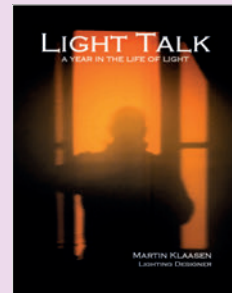
It is therefore not difficult to see that in the very near future the

lighting as we know it will be no more and it is my prediction that just like the mobile phone the actual lighting function is just a fraction of what your lighting point will be able to do. The lighting point of the future (the future is already here by the way...), will all be about data sensors, smart connectivity, communication and more. While lighting used to be designed to allow you to see in the dark or see better, tomorrow's lighting will have the capability to “see” itself and tell you what it actually sees!

With the new balance of (data) power it is also logical that building strategies and decision making in building developments will come from a different direction. Facilities managers, telecommunication companies, real estate developers, prop tech companies, just to name a few will be the new “bosses” in town. They will lead from a smart data perspective. Lighting will become secondary usage in a lighting point; the primary objective will be geared towards data collection. I have already experienced that head on in several projects, which was what triggered my search for a new approach to lighting design and eventually led to the creation of my Lighting Design of Things (LDoT) platform.

There are new players in the market, companies you may never have heard of or who you would never have thought would be involved in the build project environment, interfering with lighting, even more with controls (!) which are already starting to disrupt our traditional way of doing lighting design. But they are here and while it is hard to say how finally it will all work out, I think lighting designers should be prepared to adapt and embrace within their means the new smart (lighting) world where data (analytics) is becoming the new king and lighting (design) potentially just a necessary “by-product”. Lighting designers can however still be actively involved to make sure that lighting and lighting design remain very relevant! It is still what makes and validates any space.

Follow Martin's daily blog about lighting, Light Talk, at:
<http://lighttalk.via-verlag.com>



Martin's Book, '**Light Talk, A Year in the Life of Light**'

(ISBN: 978-981-07-0120-8),

To order a hard copy →

email: lighttalk@kl-design.co

or log into the website at www.kl-design.co/media/lighttalk

To purchase the book → Kinokuniya bookstore →

Ngee Ann City, Singapore

A soft copy of the book is now available for download
from Martin's blog site.

Rix™

REKA
INTERIORS
EXHIBITION

design infinity

17-20 OCT 2019 • 10AM-8PM
KUALA LUMPUR CONVENTION CENTRE,
MALAYSIA

Bridging designs to businesses

XPERIENCE THE EVENT OF THE YEAR

RiX celebrates design as it brings eXcitement to the Malaysian interior design industry. Approaching its third year, this event is quickly making its mark on the designer's trade event calendar as it converge professionals and trade exhibitors from all corners of commercial, hospitality, projects and properties, as well as those in academic institutions to keep up with trending industry developments.

XPERIENCE & XPOSURE

- Conferences
- Industry dialogue sessions featuring hot topics, knowledge and insights
- Masterpiece Showcase Design Installations
- Networking Parties
- Workshops

www.rixmalaysia.com

AN EVENT OF

3∞D
REKA DESIGN WEEK
2019

CONCURRENT EVENTS

3iD^
REKA INTERNATIONAL
DESIGN AWARD

CONFERENCE
REKA 2019

HELD CONCURRENTLY WITH

HOMEDec
HOME DESIGN & INTERIOR EXHIBITION

JOINTLY ORGANISED BY

mid

CIS

MEDIA PARTNERS

**bathroom
+kitchen** **lighting
today**

SIXBAR™ SUPPORTS DRAMA OF CAMBRIDGE UNIVERSITY EUROPEAN THEATRE GROUP'S OTHELLO

The Cambridge University European Theatre Group toured one of Shakespeare's darkest plays, *Othello*, recently and used effects from Elation SixBar 1000™ LED battens to enhance the drama. Featuring live jazz, this new take on the famed tragedy, which was set within the world of sixties jazz clubs, played venues in France, Switzerland, Belgium and the UK, before holding an ending run at the ADC Theatre in Cambridge from 15 – 19 January 2019.

The Cambridge University European Theatre Group is a self-sufficient theatrical company that tours a Shakespeare play around Europe every December and has been doing so since 1957. The tour is entirely student run, from organizing logistics to the technical elements of setting up lighting and sound in each venue. Tour Manager Lily Burge oversaw all logistical elements of the latest tour, while Production Manager Matthew Latham oversaw the technical elements of the show.

Students hands-on with fixtures

The run posed an opportunity to showcase Elation's multi-purpose SixBar LED battens in a wide range of venues. As it is students that make up the entirety of the company, Matthew Latham says the strong team of crew members were immensely hands on with the fixtures, from designing the rig to setting them up in each venue. Led by Production Manager Latham and Chief Electrician Dylan Phelps, the on-tour technicians were able to handle the fixtures throughout the two-week-long tour and provided a chance for the entire company to learn more about how dynamic lights are used.

Setting the scene

Eight SixBar 1000s played a key role in Emily Senior's lighting design, four of which were placed at the wings to provide side light. "This not only helped to set the scene as the play progressed, but greatly helped to evoke the theme of mystery and intrigue present throughout the show by throwing colored shadows across the stage," Senior stated. "The most important role that the fixtures played within the production, though, were their use onstage to provide backlight for the main piece of set, an 8-ft tall voile curtain." Four fixtures were placed along the top edge, allowing the curtain to become opaque. "This greatly helped to set the scene for the dimly lit jazz bar in which the play's action takes place as the fixtures provided an array of blue and purple tones."

As the entire production was filled with color, Senior says the main benefit of



Photos Credit: Gabriel Humphreys

the SixBar 1000s were their ability to provide a wide range of vibrant color, both to show shifting locations and the life and vibrancy of jazz clubs. "The range of tones they produced were extremely important," Senior says, "as was the fact that they could provide color even when lighting was extremely low in scenes where shadow and tension were to fill the stage."

The SixBar battens played a role in a number of prominent scenes, for example in Iago's manipulation where they were used to offer a dim green sidelight in an otherwise unchanging scene to suggest the presence of the 'green-eyed monster' of jealousy. "Here, the wide-ranging intensity of the fixtures was especially useful," Senior said. "But by far their most important use was in ensuring that the curtain could be made almost entirely opaque, as this allowed for numerous reveal scenes to take place. As the lighting shifted to dim the SixBar lights, the fabric could become translucent and reveal the actor behind, be it Othello listening in on Cassio's apparent admission of guilt or Bianca waiting to enter and speak to Cassio."

The SixBar houses a 6-color LED multi-chip for a wide palette of colors and a discreet, slender design means it can be hidden away when needed. "Their compact, slim size also made them ideal for a touring show, as not only did this mean they were extremely easy to pack away and store on the coach, which carried the entire company and equipment, but it also meant they could fit in even the smallest of wings in the venues visited on tour," the lighting designer states.

LED advantages

The Cambridge University European Theatre Group toured *Othello* using a rig of mostly LED fixtures, the advantages of which were not lost on Production Manager Matthew Latham. He commented: "As well as providing incredible flexibility to our designers during the show itself, the LED-based rig significantly simplified power requirements and therefore helped increase the speed of our get-ins. We have very short get-in windows, and each venue presented a totally different technical set-up, which often complicates rigs with conventional fixtures. The SixBar 1000s were ideal for our design; its huge range of colors helped us to create a visually stunning production, whilst being great on tour as it is so lightweight."

About Elation Professional

Elation designs and manufactures a comprehensive range of innovative lighting and video products known for their excellent efficiency and outstanding performance. As a company in expansion with a presence in a growing variety of market segments, chances are you've experienced Elation lighting at a concert, special event, TV, theater, late night venue, House of Worship, theme park, cruise ship, exhibition, architectural space or elsewhere.

For more information, please visit www.elationlighting.com.





LIGHT Asia 2019

The 6TH International Lighting Technology Show

1 - 3 October 2019
Halls B & C, Marina Bay Sands, Singapore

10,000sqm gross exhibition space • **250 exhibitors** from 20 countries •
9,000 trade professionals from 40 countries

*Combined statistics across Architecture & Building Services 2019

Be a part of **LIGHT Asia 2019** - the only trade show dedicated entirely to the lighting industry in Singapore. It features the latest LED and lighting technologies from industry professionals, tapping on new opportunities such as energy savings solutions to cater to the needs of architects and key customers around the world.

JOIN LIGHT ASIA 2019 TODAY AND

- Expand your business network and explore new opportunities
- Stay updated on industry trends and developments
- Maximise your marketing & publicity efforts

For booth enquiries, contact:
LLA@cems.com.sg or call
(65) 6278 8666
www.ledlightasia.com.sg



A Part Of



Organised By **CEMS**
Conference & Exhibition Management Services Pte. Ltd.

1 Maritime Square #09-43, HarbourFront Centre, Singapore 099253
info@cems.com.sg • (65) 6278 8666

AYRTON'S INTRODUCES LEVANTE™ WASH LIGHT – THE SCULPTOR OF LIGHT

Ayrton is very proud to announce the arrival of its new ultra-compact Levante™ 300W LED wash luminaire which is now ready to ship.

Levante – the Sculptor of Light

Weighing just 22kg, Levante is a dramatically miniaturised version of the Bora wash light, endowed with outstanding performance capabilities in an ultra-compact form that matches the dimensions of Mistral™ and Diablo™.

With Levante, Ayrton has created a wash luminaire that can sculpture light. They have also added a high-transmission diffusion filter to the zoom lens group to erase the edge of the beam without changing its angle. A variable linear frost system allows the user to adjust the desired diffusion level with precision.

Delivering a stunning light output in excess of 20,000 lumens (Levante-S) through its 138mm frontal lens, Levante's optical system is specially developed for optimum wash applications. Its 13-lens proprietary optical system features a zoom ration in excess of 9:1 and a 6.3° to 58° zoom range, and produces an extremely uniform flat beam that ensures a perfect colour mix regardless of the colour combination selected.

Levante's many features include a barndoor module that allows shutters to be positioned freely across 100% of the surface area, a CMY colour mixing system, a variable CTO and a wheel with seven complementary colours, to create an infinite palette of vivid pastels and saturated colours. In addition, a 15-blade iris diaphragm and a wheel with seven indexable rotating gobos are supplied as standard. Levante is a marvel of technology, an artist's washlight that will attract the most demanding lighting designers.

Both Levante and its sisters, Diablo and Mistral, are available in two versions: Levante-S is specially designed for stage applications and utilises a monochromatic LED light source that can generate an ultra high output and metallic white light calibrated at 6500K; Levante-TC is geared for applications that require perfect colour rendition, and uses a monochromatic LED source with a native CRI greater than 90, high TM30 readings and a 5700K colour temperature.

Ayrton's new Levante washlight follows the Ayrton theme of Smaller, Lighter, Brighter. Levante is shipping with immediate effect and demonstrations can be arranged through your local Ayrton distributor.



About Ayrton

AYRTON is specialized in developing intelligent LED light products for Entertainment and Architectural applications. Based south of Paris, France, the AYRTON Headquarters and Research & Development centre combine and organize the highest competence in engineering, software, electronics and optics, with the aim to create highly innovative fixtures.

For more information, visit www.ayrton.eu.

ELATION EXTENDS PRODUCT WARRANTY TO 5 YEARS ON LATEST LED LUMINAIRES



Elation Professional is pleased to announce a new warranty policy that extends its standard limited product warranty to 5 years on LED light engine sources for some of its latest and most popular LED luminaires. In addition, warranty coverage on fixture components has been extended to 3 years for products used in registered indoor fixed installation projects.

The 5-year/3-year limited warranty applies to Elation's Artiste, Fuze, KL Fresnel, Seven and Profile LED product series for indoor installation projects installed and maintained by an authorized reseller. Products used on temporary indoor rental projects also benefit from the extended 5-year warranty on LED engine sources with warranty coverage on fixture components remaining at 2 years. All exterior-rated lighting products continue to be covered by Elation's standard 2-year limited product warranty for the LED source and fixture components.

Eric Loader, Global Director of Sales & Marketing at Elation, commented on the new policy: "High power LED technology has evolved and matured to the point that it now allows us to offer this extended warranty to our customers. Because we work closely with our component suppliers and select only the highest quality key components to engineer into our products, the long-term reliability of our products has increased tremendously. We therefore feel very confident in being able to provide this extended warranty offer to our customers, adding even more value proposition to our product line."

The new extended warranty coverage went into effect as of April 1, 2019.

About Elation Professional

Elation designs and manufactures a comprehensive range of innovative lighting and video products known for their excellent efficiency and outstanding performance. As a company in expansion with a presence in a growing variety of market segments, chances are you've experienced Elation lighting at a concert, special event, TV, theater, late night venue, House of Worship, theme park, cruise ship, exhibition, architectural space or elsewhere.

For more information, please visit www.elationlighting.com.

CAMBODIA'S BIGGEST INTERNATIONAL **BUILDING,** **CONSTRUCTION AND M & E** INDUSTRY SHOW



18 19 20

SEPTEMBER 2019

DIECC (KOH PICH), PHNOM PENH

CAMBUILD'19

CAMBODIA'S BIGGEST INTERNATIONAL BUILDING & CONSTRUCTION INDUSTRY SHOW

Co-located with:



**CAMBODIA ARCHITECTS
FORUM 2019**
18 SEPT 2019 • KOH PICH, PHNOM PENH

Endorsed by:



Ministry of
Commerce
Cambodia

Hosted by:



Board Of
Architects
Cambodia

Organised by:



Building #128, Office No: 103, 1st Floor, Russian Federation Blvd (110),
Sangkat Toek Laak 1, Khan Tuol Kork, Phnom Penh, Cambodia
Tel: 089 714 700 / 023 901 579 Email: somaly@ambtarsus.com

**TO EXHIBIT
CONTACT US AT**

☎ 089 714 700/023 901 579 **✉ somaly@ambtarsus.com**
f CamBuildCambodia **🌐 www.cambuildexpo.com**

EILON ENGINEERING & AED GROUP ANNOUNCE NEW PARTNERSHIP AT PL+S 2019

At Frankfurt, during Prolight & Sound, Eilon Engineering and AED group announced their new partnership. AED group has been appointed as the new distributor of Eilon products in the Benelux countries. The total product range of Eilon Ron StageMaster systems will be available for sale at AED Distribution.

AED are happy to have Eilon Ron StageMaster systems available in their rental fleet at AED Rent. The 3-ton load cells will be available for rent together with the PRR and DIN 19". The PRR allows transmissions of measurement data of up to 75 load cells to any smartphone or tablet via Bluetooth. Loads can be displayed as a real-time load map, table or bar graph. The DIN 19" is a rack-mountable radio receiver for use with laptops that allows display of measurement data of up to 200 load cells on a real-time load map.

"After testing and looking into all the most common systems on the market, the Ron StageMaster was the best choice for AED. We're impressed by the easy and quick set up of the system that provides you all the data and reports you need," said Bart De Smet, Rigging Advisor at AED group.

Noga Eilon Bahar, VP Business Development at Eilon Engineering, commented: "We are happy to begin our cooperation with AED for renting, leasing, distribution and service of our Ron StageMaster systems in Benelux and beyond. This cooperation with AED, a well-known, established, total solution provider in the AV industry, is an important addition to the Ron StageMaster distribution network worldwide and a natural addition to AED's line of products. I am sure that this cooperation will be successful and together we will make live events even safer."

PORTMAN LIGHTS LAUNCHES ALL-LED P1 MINI AT PROLIGHT+SOUND 2019

Portman Lights, the Polish manufacturer of unique decorative stage lighting, has just released its newest product at Prolight+Sound 2019, Frankfurt. The P1 mini LED is the latest in its highly specialised range of products; it exhibits a tungsten look and retro style to match Portman Lights' existing product line...but this time with FULL LED!

Established in Gdansk in September 2016 by Łukasz Szejna and Dominik Zimakowski, Portman Lights, recently announced its partnership with The French Team. Despite being only 30 months old, the company already has a distribution network of 25 top class distributors covering 35 countries and a portfolio of concerts, festivals and television shows that includes Cher, Ed Sheeran, Miley Cyrus, Mumford and Sons, Sting; Glastonbury, Roskilde, Open'er; X Factor UK, America's Got Talent, Voice of Spain, Germany, Netherlands, Eurovision 2018 finals... and many more.

Arranged in the same configuration and housing as the original P1 Retro Lamp, P1 mini LED combines two layers of light sources: a special 1800K linear filament and an RGBW glow that adds colour and enhances the creative possibilities of the new fixture.

"We are very excited to bring our new P1mini to the market at Prolight+Sound," says Portman Lights' Business Development Manager, Dominik Zimakowski. "This is a ground-breaking product for us because, for the first time, we have produced a full LED stage lighting fixture whilst retaining the truly vintage, halogen look. P1 mini LED provides that unique Portman Lights look that is so in demand for television and live performance, yet answers the growing demand for LED light sources."

P1 mini LED is also a perfect product for permanent installations because its total power consumption is less than 100W per unit, and it is designed to run off 110V-230V power.

The new fixture met with huge interest among Portman Lights' distributors and new customers at the show. "We anticipated P1 mini LED would generate a lot of interest, but were very happy to see our expectations were exceeded by the amount of enquiries we received," says Portman Lights lighting designer, Łukasz Szejna. "We took our first pre-orders at the show and will be kept busy with the many leads for weeks to come!"



Łukasz Szejna and Dominik Zimakowski with the new P1 mini LED launched at Prolight+Sound 2019.

First deliveries of P1 mini LED are due in June 2019.

About Portman Lights

Portman Lights designs and manufactures unique, professional stage lighting fixtures which focus on originality of look, precision detail and remarkable quality to support the most creative lighting designs. Portman Lights products include the patented P1, P2 and P3 fixtures – retro look halogen lights created from the founders' passion for the stage and love of music.

For more information, visit www.portmanlights.com.

**THE NO.1 PLATFORM FOR MYANMAR'S BUILDING
& CONSTRUCTION INDUSTRY**

MYANBUILD'19

MYANMAR INTERNATIONAL BUILDING & CONSTRUCTION INDUSTRY SHOW

**MYANMAR'S NO.1 INTERNATIONAL
BUILDING & CONSTRUCTION
EXHIBITION AND
CONFERENCE**

28 29 30

**NOVEMBER 2019
MYANMAR EXPO HALL, YANGON**

To Book Your Booth at the Expo, Contact Ms. Ei at +959 250371296 or
ei@ambtarsus.com



www.myanbuild.net



[www.fb.com/Myanbuild](https://www.facebook.com/Myanbuild)

Co-located with:



**MYANMAR ARCHITECTS
CONGRESS 2019**

28 NOVEMBER 2019 - MYANMAR EXPO HALL, YANGON

Hosted by: Organised by:



M **AMBTarsus**
EVENTS GROUP

ELATION LIGHTS FOR ONE OF WORLD'S BIGGEST ESPORTS EVENTS IN KATOWICE, POLAND



Fans from across the globe turned the Polish city of Katowice into the epicenter of esports in late February for the Intel Extreme Masters tournament. Included in the large lighting and video package used by Warsaw-based technical event production company ARAM were full color SixBar 1000™ and white light DTW Bar 1000™ battens along with Fuze Par Z60™ luminaires, all from Elation Professional.

Intel Extreme Masters is one of the biggest esports events in the world with a modern multimedia Champions Stage designed especially for the tournament. Held February 28 - March 3 at Spodek Arena in Katowice, players and teams from around the world competed in a variety of games for a prize pool of \$2.5 million.

The Electronic Sports League (ESL) sanctioned event, sponsored by Intel, is not only a hot ticket to come by, it attracts a huge online audience as well. "Every year we try to introduce something new to the stage look so both the online audience and live audience will be amazed and have a great experience," said Michal Mrzyglocki, COO and set designer at ARAM. "This year, we set the bar high and I think we managed to meet expectations."

This year's design featured large LED screens and a renewed lighting design that featured 650 lighting units. A signature of the 2019 Champions Stage was a scaffold structure used as both a support system and design element. Framing several LED screens positioned behind the teams were meter-long SixBar 1000 battens with 6-color LED multi-chip and a discreet, narrow profile that makes them ideal for outlining applications. Used for its wide palette of colors, Mrzyglocki says it was also a good solution because of its "great-looking" lens.

Providing uplighting as well as backlighting for the players were white light DTW Bar 1000s, color temperature adjustable LED battens that emulate the look of



conventional tungsten fixtures. "Another advantage of the battens was their ability to be positioned close to players without the worry of overheating players, even if they stood nearby," Mrzyglocki said. Uplighting the main structure of the stage and bathing the set in a uniform field of color were Fuze Par Z60s, a silent par luminaire with single-lens RGBW COB LEDs and zoom functionality.

For the past few years, ARAM has been a technical production partner for most of the major esports events produced by ESL around the world. Apart from the Champion's Stage at Intel Extreme Masters Katowice, ARAM also handled lighting, video and staging at other stages. "IEM Katowice is a very special event for us and we are proud that we can be a part of it. We haven't had the last word yet and are already thinking of how to entertain you in 2020!" Mrzyglocki concludes.

About Elation Professional

Elation designs and manufactures a comprehensive range of innovative lighting and video products known for their excellent efficiency and outstanding performance.

For more information, visit www.elationlighting.com.

ALTMAN LIGHTING ACCENTUATES THE SOUND WITH LIGHT AT THE MUSICAL INSTRUMENT MUSEUM

Integration specialists Clearwing Systems works with Schuler Shook and installs a colorful and silent LED lighting design using fanless PHX 150W LED profile luminaires

Yonkers, New York – Displaying more than 6,800 instruments from around the world, the Musical Instrument Museum (MIM) in Phoenix, Arizona, allows their guests to not only see and hear the instruments, but also allows them to observe the music being played in its original context. Hosting a number of historic and educational performances inside the intimate MIM Theater, the technical production behind each event must be able to accentuate the experience of the sound. With a state-of-the-art audio and projection system already in place, the theater worked with Theatre Consultants and Lighting Designers Schuler Shook and Clearwing Systems who installed a silent yet powerful LED lighting design using PHX 150W profile luminaires from Altman Lighting.

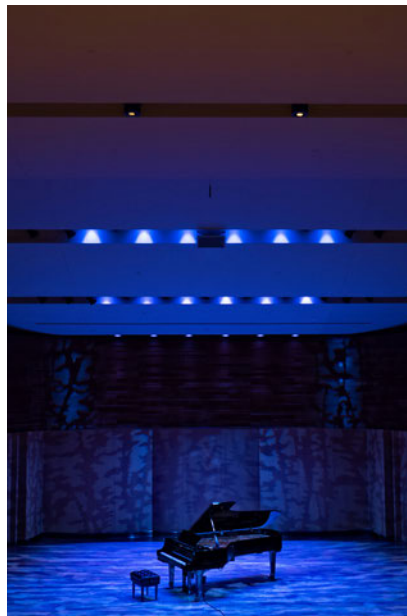
“We have had the opportunity to work with the MIM on a few previous projects and this time we were brought on board to complete an LED lighting and dimming retrofit for their 300-seat Music Theater,” began Ken Gardner, Clearwing Systems. “What drove their decision to complete the renovation was the better efficiency of LED lighting, plus the ability to quickly change color in the lighting rig. Needing to constantly change gel in their old lighting fixtures was beginning to get costly and was limiting them creatively. Now with the PHX 150W LED luminaires, they can quickly change the entire scene with just the touch of a button, and they are very pleased.”

As one of the only convection-cooled LED profile fixtures available today, the PHX 150W LED profile is ideal for venues desiring superior, energy-efficient lighting in an acoustically sensitive environment. With a standard fixed beam, zoom ranges from 15-35 or 30-55 degrees, a 360-degree rotating barrel, and a die-cast aluminum frame, the PHX 150W LED profile is also available in a diverse line of LED choices including RGBA, RGBW, 3000K, 5600K, and tunable white versions.

“The Musical Instrument Museum is dedicated to bringing in all sorts of artists from all over the world and exploring the differences in music through both live performances and guest lecturers,” continued Gardner. “Due to the intimacy of the Music Theater, they also needed a fanless LED fixture with an RGBA version to give them a ‘warm’ amber look for the



Photos Credit: Clearwing Systems



artists on stage. We instantly thought of the PHX 150W luminaires because we have relied on Altman Lighting solutions for a number of projects, and they make quality fixtures.”

With the previous lighting design operating on SineWave dimmer racks, the team at Clearwing Systems also needed to install a rack capable of powering a hybrid fixture layout. Now ready for the completely updated lighting system to spring to life, the museum was eager to experience the stunning acoustics of the MIM Music Theater accentuated by their colorful yet silent lighting rig.

“The PHX 150W LED profile is a great fixture for a space where music and sound are the emphasis of the event,” concluded Gardner. “Once the installation was complete, they were blown away with the ability to create virtually any color of the rainbow using a fanless LED solution. This has been a tremendous advantage for them, and they are thrilled to have the PHX LED luminaires in their new lighting design.”

About Altman Lighting

Built on quality and excellence, Altman Lighting is one of the leading innovators of theatrical, architectural, film and video lighting today.

For more information, visit www.altmanlighting.com.

ELATION UPGRADE FOR POPPODIUM NIEUWE NOR, THE NETHERLANDS

If you find yourself in the southeast corner of The Netherlands and have a hankering for live music, Poppodium Nieuwe Nor with its new Elation lighting system is an excellent spot to satisfy your craving. The 400-capacity venue in the city of Heerlen not only hosts a diverse program of music from pop and hip-hop to metal, blues and everything in between, it also holds regular club nights with DJs and serves as a great location for corporate presentations and other events.

Bigger acts, greater needs

As Nieuwe Nor was getting in bigger acts with greater lighting needs, the venue's existing discharge-based lighting rig was proving outdated with limited features and color choice, as well as restricted output. "It just couldn't deliver some of the things guest LD's were looking for," says Yuri Gidding, head technician at the venue. Having to replace lamps every year was also taking a bite out of the tech budget, he says, and as the contract with their previous supplier was ending, the time was right to upgrade.

"Since we get a lot of different kinds of acts in, the lighting we required needed to be feature packed," states Gidding, who was responsible for the entire lighting system upgrade including design, fixture choice, rigging, plots, patching, etc.. "We needed something that could create lots of different moods and looks, something that could, for instance, do wide spots with break-up gobos or animation effects for slow intimate music but also punchy beams and fast switches between looks and colors for club nights or a metal band." Gidding says he also wanted to move away from discharge-based fixtures in order to avoid lamp changes and lower the power consumption. Furthermore, he says the fixtures needed to be reliable and from a reputable brand.

Artiste DaVinci

After comparing a host of different brands, Gidding chose Elation LED luminaires, a package that includes eight of the company's award-winning Artiste DaVinci™ LED moving spots. The technician attended a shootout between the Artiste DaVinci and competitive fixtures, all LED based spots that met the requirements for what he wanted. "The DaVinci came out best in the shootout on almost all fronts," he said of the CMY and graphics moving head DaVinci which houses a 300W LED engine and 7° to 48° zoom. "The output, color mixing and zoom range were exactly what I was looking for."

The DaVinci fixtures serve as the main spots in the rig and are hung above the stage on two electrics. "The light output is plenty to accommodate all the features of the fixture and suitable for the larger hall we are planning to build since the fixtures will very likely move there once it's finished." Nieuwe Nor has existed in its current state since 2007 and is planning to expand with a second 650-700 capacity hall set to open in Q3 2020.

Floor flexibility

Because the venue is relatively high for its depth and width, Gidding also wanted the flexibility of floor-based lighting. "There was quite a big black gap behind the band/DJ so I wanted something we could quickly setup and tear down to easily create different designs and effects," he explains. "We have 14 SixBars as our floor package and they can be placed anywhere on stage or throughout the hall. Apart from effects, we also use them for side lighting and lighting a cyclorama so decent colors were important." According to Gidding, the SixBar was the only decent strip/bar light of its size available. "All the others were from less reputable brands and simply didn't meet the build and optics quality I was looking for. The RGBAW-UV color mixing is awesome and it works perfect for what I wanted."



Sefa - Photo by Kyra Verboord



Aicha Cherif - Photo by René Bradwloff

In keeping with his desire to avoid lamp changes and lower the power bill, Gidding went with four LED-based Protron 3K strobes, which, he says, have similar output to an Atomic 3000. "I also like the fact that they try to hide the LED's somewhat," he said. "I don't really like the look of strobes that are just a rectangle of lenses / LED chips." Also in the rig are LED wash lights, 38 ADJ 5P Hex's used as house lights, and 1K tungsten Fresnels and ellipsoids for front lighting. Demo Productions supplied the lighting and audio for the install, which included an upgrade of the PA system.

Stands out

"Overall I'm very pleased with the Elation fixtures we have and we get very positive responses from freelance and guest lighting technicians that come through our venue," Gidding sums up. "Most are a little unfamiliar with the brand but are always very surprised by the rig and what the fixtures are capable of. Elation has definitely helped us in becoming a more professional venue that, to technicians, stands out among others in the region."

About Elation Professional

Elation designs and manufactures a comprehensive range of innovative lighting and video products known for their excellent efficiency and outstanding performance. As a company in expansion with a presence in a growing variety of market segments, chances are you've experienced Elation lighting at a concert, special event, TV, theater, late night venue, House of Worship, theme park, cruise ship, exhibition, architectural space or elsewhere.

For more information, please visit www.elationlighting.com.

PLODIV'S SPECTACULAR EUROPEAN CAPITAL OF CULTURE YEAR OPENING WITH GLP



On 12 January 2019, the Bulgarian city of Plovdiv began its year as one of the two European Capitals of Culture for 2019. The opening ceremony was again under the artistic direction of Sven Sören Beyer of phase7 performing.arts. For the third time, the Berlin artist collective took over the artistic design of the opening ceremony of a European Capital of Culture, and the opening show titled “WE ARE ALL COLORS” attracted over 50,000 viewers.

The central element of the show was a 30m-high media tower in the form of a regular octagon, which had been designed and built specifically for the event. Running in a north-south direction, a 100m catwalk linked to the tower. The 360-degree light show spanned across all five levels of the entire tower, 1,500 show participants performed on five levels. The spectacular performance combined traditional Bulgarian show acts with futuristic performances as well as state-of-the-art media technology and a dramatic light design conceived by Björn Hermann.

After using GLP’s modular KNV LED system for the first time at the christening of the AIDAnova cruise ship in the summer of last year, Björn Hermann immediately realised that this solution could be deployed at this follow-up assignment in Plovdiv: “The tremendous brightness and special effects that can be realised with the KNV make the system unique, and without alternative. At the christening of AIDAnova, I knew immediately that we needed the KNV in Plovdiv as well.”

Like the previous year, Oliver Schwendke and Michael Feldmann from GLP also supported phase7 performing.arts during the preliminary discussions for the KNV deployment in Plovdiv. Consequently, in Plovdiv, 100 GLP KNV Cubes were specified and installed in the scenic tower. Thanks to their IP54 rating, the use of the fixtures outdoors was no problem either. The tower contained numerous LED screens, with five-metre gaps between each. The KNV Cube not only bridged the gaps, but also allowed phase7 to run content via pixel mapping, and flash lighting cues ten times brighter than the adjacent LED walls.

“The KNV Cubes are simply made for this project,” enthuses

Björn Hermann. “When I let the modules light up in white, half of the city was brightly lit! It was a real gigantic look!”

And certainly the opening ceremony in Plovdiv will not have been the last project in which Hermann trusts the power and flexibility of GLP’s KNV. “The KNV system offers me 25 powerful individual LEDs, each extremely bright. In addition, there are the LED rings, with the result that 100 KNV looked like several hundred individual stroboscopes. I cannot produce that with any other lamp on the market. Quite apart from that, there is currently no other strobe with such performance that you can use it without hesitation outside.” All in all, the successful show was produced entirely in the artistic language of phase7 performing.arts, which is uniquely dedicated to the fusion of technology and performance.

The project team consists of Sven Sören Beyer (director), Björn Hermann (lighting designer), Steffen Fuchs (technical director), Christian Steinhäuser and Maximilian Trieder (musical direction and arrangement), Frieder Weiss (interactive software art) and Hajo Rehm and Daniel Bandke (video design).

About GLP (German Light Products)

GLP was founded in Karlsbad, Germany in 1994, by Udo Künzler, and has evolved into one of the leading manufacturers of high-quality and innovative lighting technology — and in recent years become market leader in LED technology for the theatre and event industry. With the award-winning impression series GLP has created a new standard in the lighting industry, which is used and valued by leading lighting designers. Thanks to an ever-growing range of products, GLP gives designers around the globe eco-friendly and energy-optimized spotlights without restrictions in creativity or performance demands.

With the acquisition of G-LEC and the opening of offices in Los Angeles (USA), Hong Kong, United Kingdom and Sweden, GLP has been able to strengthen and expand its global market position in recent years.

For more information, visit www.glp.de.

ROBERT JULIAT STILL SHINES IN THE HOUSE OF DANCING WATER, MACAU

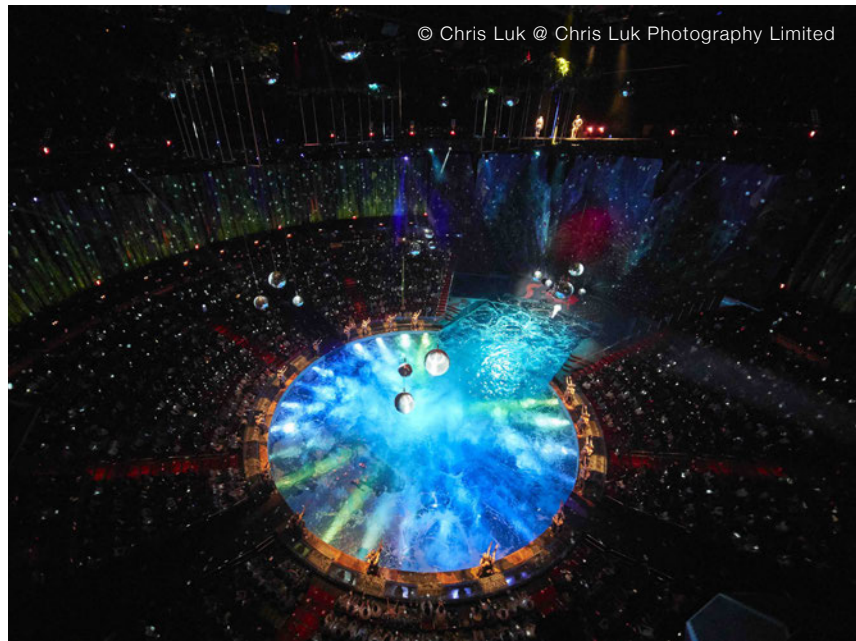
The House of Dancing Water is a USD250m, enthralling visual feast which has been seen by over 5 million people since its premiere in 2010. It is the largest and most spectacular water-based show in the world and, after more than 3000 performances, the longest running show on the Cotai Strip. The show takes place in the purpose-built, 2000-seat, 270° in-the-round, House of Dancing Water Theatre and is directed by the world-renowned and highly creative Franco Dragone. The story is focused around a huge 50m x 7m deep pool containing 3.7million gallons of water and involves 90 performers and over 200 international technicians who work their magic to create a scintillating show that dances with colour and light.

The House of Dancing Water show's lighting designer, award-winning Luc Lafortune, originally specified Robert Juliat Victor followspots and 14 RJ D'Artagnan profiles, all of which have worked hard for 8 years, playing ten shows a week in a highly unusual, moisture-filled environment, and been maintained by the lighting team led by Head of Lighting, Projections and Special Effects, Karl Jenkins.

As part of the recent upgrade of the spectacular Franco Dragone show, The House of Dancing Water in Macau's City of Dreams, Six Robert Juliat 600W LED Oz followspots were installed. The powerful, long-throw LED models were supplied with push-pull, 6-way colour changers and heavy-duty adjustable yokes in anticipation of the show's extremely busy schedule.

For the show's upgrade, Jenkins had no doubt that the replacement followspots should also be from Robert Juliat. "Robert Juliat provides some of the most optically accurate luminaires in the world, and for this reason and their amazing longevity, they were chosen for the original build," he explains. "There was no question that the replacement for the Victor followspots, after 8 years of excellent service, would be anything other than another RJ fixture. With the large push towards sustainable shows and LED technology across the board, the RJ Oz is the best fixture on the market by far for our needs and, with its release aligning precisely with a major upgrade of the show, it was a perfect candidate for the replacement."

Retaining the initial design intention of the show was important to the lighting team when considering the replacement, so a demo unit was provided by Pacific Lighting (HK) Ltd to allow them to make an accurate assessment: "The performance of the



© Chris Luk @ Chris Luk Photography Limited

Oz when seen side by side the Victor exceeded our expectations and the light output was more than suitable for our needs," confirmed Jenkins.

Jenkins has extensive experience with Robert Juliat lanterns and followspots, having worked as Head of Lighting on many productions for Cirque du Soleil – where RJ equipment has played an enormous role - before heading up The House of Dancing Water. "Brightness, beam quality, robust engineering, reliability, ergonomics, power consumption...all of these were considerations that we took into account when making the decision," he says, "but, for me, it was the power from the LED that ultimately won me over. After 10 years of experience with RJ products, the other features are a 'given'!"

Like their predecessors, the six RJ 600W LED Oz followspots are rigged evenly around 270° of the circular grid above the audience, and used to highlight the show's main protagonists. "The production has an incredibly heavy and meticulous followspot design as is the case with many of Luc's designs," states Jenkins. "For this reason, an elegant yet powerful LED fixture was required to achieve everything from the beautiful low-light character highlights to high-energy powerful punches of light.

"In addition to this, from the operators' point of view, Oz's lack of ballast and the general heat reduction is also a great asset, and the electronic dimming in the LED fixtures is based on the same physicality of the existing dimming system, so makes for an incredibly simple transition for operators.

"We are extremely happy with the new LED replacements and I would specify Robert Juliat again, especially the new LED range, without a doubt."

The RJ Oz 600W LED followspots – and all the show's RJ equipment - were supplied by White Light Ltd via Robert Juliat's local distributor, Pacific Lighting (HK) Ltd, which has sold over 160 Robert Juliat followspots to the region since becoming part of the RJ family.

Six newly installed Robert Juliat Oz 600W LED followspots perform in strong and subtle fashion at Franco Dragone's The House of Dancing Water in Macau's City of Dreams.

About Robert Juliat

Robert Juliat was founded in 1919 and is still a 100% family-owned company today. The company is the renowned manufacturer of top-quality lighting fixtures based around superb optics and ergonomic design. All Robert Juliat luminaires are designed and built in France.

For more information, visit www.robertjuliat.com.

LOUIS OLIVER PICKS AYRTON KHAMSIN, BORA AND MISTRAL FOR SHAWN MENDES: THE TOUR



Photo Credit: © Ralph Larmann

Shawn Mendes: The Tour hit the road at the beginning of March on a 9-month, 105 date world tour under a lighting rig which comprises Ayrton Khamsin-S, Ayrton Bora-S and Ayrton Mistral-S fixtures as the major components.

Lighting designer, Louis Oliver, chose to work with Ayrton fixtures to provide key lights for the young Canadian singer by using creative back, top and side light to carve out dramatic backdrops. He says, "We wanted to keep the performance space organic, allowing the technology to hide in the background. With the design, we wanted to craft bold environments for Shawn to perform within. We tested the new Ayrton fixtures and found they could compete with anything else on the market. Ayrton has created a range of LED fixtures you can use without compromise."

The 78 Khamsin-S profile units are the workhorses of the show, rigged on three motorised trusses upstage of the performance area, on the front and B stage truss as well as five units strategically placed around the stage. Each of the upstage trusses and the front truss house 15 to 21 Khamsin-S units which are used as key light and to create a multitude of atmospheric looks to frame and enhance the performance space.

"Each song has its own colour tone and is very identifiable by this and the looks created by the position of the trusses and lighting / visual arrangement," says Oliver. "The songs are musically and visually complementary with varying pastel colours. It's great that the Khamsin & Bora can produce these subtle colours."

Overhead, a rectangular mothergrid supports a Circular framed LED screen and two Khamsin-S fixtures located in the centre - the only lighting directly above the stage - which are used solely for back pick up. Three additional Khamsin-S are located at stage level - one at the bottom of the central

staircase to light Mendes' big statement entrance, and one on the far edges either side of the stage to provide harsh cross light on Mendes.

Sixteen Bora-S wash fixtures are treated as floor package but are actually rigged on floor based pre-rig truss upstage of the main stage, from which position they are used as backlighting and for aerial effects. "The Bora are extremely versatile," says Oliver "The Boras provide a very noticeable source of backlight for Shawn and the band. Where the units are positioned allows them to remain out of sight until outputting. They are a fantastic complement to the Khamsin, with a larger lens and varying frost filters. Using them both provides a cohesive lighting rig."

Ayrton also plays a large part on the circular B-stage in the centre of the arena which is overhung with a circular truss. From this, four Khamsin-S are individually attached to lightlocks which can then move through vertical space via custom winches to create shapes around Mendes. In addition to this highly original key light on Mendes, these Khamsin also serve as additional audience lighting and add dynamic interest during the VT breaks, helping to create a mysterious vibe and draw the audience attention. "The winches allow us to quickly change the physical position of the individual lights, giving us a new box of creativity to compliment the simplicity of the B-stage," says Oliver. "It is also exciting for the audience as the Khamsins can float a few meters above head height."

The B-stage set-up is completed by 8 Mistral-S spot fixtures sited on floor shelves to deliver effects and textures on the floor during Mendes' piano break, acting as additional lighting on the audience and during VT moments as a more subtle alternative to audience blinders. "The whole look is more organic to match and complement the spirit of the show," says Oliver.

The B-Stage's spectacular centre-piece is a giant LED rose sculpture which reflects the album cover artwork. "We discovered early on that Khamsin has a rose gobo as standard. This was a welcome surprise as the rose is the icon of tour," says Oliver. "It was the most used gobo in the show and we didn't need to make 80 custom gobos!"

The move to LED lighting was a conscious decision by the tour's creative team which was confirmed after a successful shoot out hosted by Ambersphere, Ayrton's exclusive UK distributor. "We all knew we wanted something new and sustainable for this tour and I was keen for us to move to LED," explains Oliver. "We didn't think the technology was quite there yet with what was on the market, then Christie Lites (the tour's supplier) introduced us to Ayrton's new wash and spot fixtures and we saw they could stand up against anything. They are great for all purposes and you don't have to compromise on any features."

"From the aesthetic point of view, Ayrton is a joy to have in a rig – they are a plain black fixture with no obvious branding, super clean lines, a nice shape, and uniform in appearance across all versions. When they are not on, they are almost invisible, but if ambient light hits them (such as the light from 10,000 audience smart phones!) they still look fantastic!"

A major deciding point for Oliver was the ability for Ayrton fixtures to remain true to their original design and



programming, in terms of focus, brightness, colour temperature, etc for the whole duration of the tour. Glyn O'Donoghue, CEO of Ambersphere, comments: "This is due to Ayrton's superb design concept which keeps the front and back halves of the fixture separate from each other. This means that the circulation of air does not pass over the optics so the lenses remain much cleaner and the appearance of the beam remains the same as the day the tour started. From a technician's point of view this also means a significant reduction in maintenance and man-hours on the road and in the rental house as the optics need less cleaning and the LED source does not need regular changing. This isolation is a true signature of the new generation of Ayrton fixtures which makes them unique."

Oliver agrees: "Ayrton has always been at the forefront of LED development with their effects lighting, so they've been continually ahead of the game – setting standards that other manufacturers note and take inspiration from. Now they are ahead of the game, creating a new range of spots, washes and multifunctional lights that truly compliment everything else in the rig. LED has come of age with these fixtures, allowing us designers to design a more sustainable, environmentally conscious show."

For more information, visit www.ayrton.eu.

LIGHTING PRODUCT DESIGN OF THE YEAR 2018 AWARD AT THE LIGHT IN THEORY (LIT) DESIGN AWARDS™



'E2H – Earth to Humanity' collection by Ross Lovegrove; Hryb Lamp, Nervi Lamp, Urqino Lamp

The internationally renowned porcelain brand, Vista Alegre, has been presented with a coveted 'Lighting Product Design of the Year 2018' award within the Ambient Lighting category at the Light in Theory (LIT) Design Awards™. The award was given to their innovative and creative 'E2H – Earth to Humanity' collection in collaboration with Ross Lovegrove.

Designed exclusively for Vista Alegre, the 'E2H – Earth to Humanity' collection was inspired by the beautiful logic found in nature. These lamps are a fusion of modern technology, material science and intelligent organic shapes. This collection is comprised of the Hryb lamp, the Nervi lamp and the Urqino lamp, all of which have

been the recipients of respected awards in their own right. As a collection, 'E2H – Earth to Humanity' is a German Design Award Winner 2019 and has also won a Good Design Award. The Hryb and Nervi lamps were awarded an Iconic Design Awards: Innovative Interior 2019, and furthermore the Hryb lamp received a European Product Design Award in the same year.

Every year, the LIT Design Awards™ recognise the efforts of talented international lighting product designers and lighting implementers. Organised by The Farmani Group, the LIT Design Awards™ was created to recognise the efforts of talented international lighting product designers and lighting implementers. The group, and by extension the awards, understand that lighting is both an art and a science, and is one of the most important elements of design. The LIT Design Awards™ are open to submissions from around the

world and are presided over by a respected jury composed of designers and leaders in the field of lighting, interior design and architecture. The awards celebrate creativity and innovation, thus drawing attention to the lighting and designers working in this creative field.

About Vista Alegre

The porcelain factory Vista Alegre was established in 1824, in Ílhavo, Aveiro. Over the years, the brand has always been closely associated with Portugal's history and cultural life, acquiring a unique international reputation. In 2001, Grupo Vista Alegre (porcelain, faience and stoneware) merged with Grupo Atlantis (high quality handmade crystal and glass), creating one of the largest tableware and giftware groups in Europe: Grupo Vista Alegre Atlantis. In 2009, Grupo Vista Alegre Atlantis became part of the Grupo Visabeira company, following a public takeover bid of Vista Alegre Atlantis shares.

Contemporary design artists within the painting, sculpture, architecture, and literature as well as other art forms, have lent their talent to many creations of the brand. Siza Vieira, Joana Vasconcelos, Patrick Norguet, Malangatana, Sempé, Karim Rashid, Brunno Jahara, Carsten Gollnick, Sam Baron, Piñeda Covalin and the French brand Christian Lacroix are some of the artists who have associated their name with Vista Alegre.

Vista Alegre services are officially used by the Portuguese President, the White House as well as several Royal Houses, as well as several celebrities all across the world, such as Queen Elizabeth II, King Filipe of Spain, and Queen Beatrix of the Netherlands. Vista Alegre also supplies official tableware for several embassies all across the world, namely Brazil, Spain, and Morocco, as well as for national and foreign public or private institutions.

WHITE LIGHT BRINGS NIGHT OF THE LIVING DEAD TO LIFE



Photo Credit: © Clare Bilyard

White Light has supplied the lighting equipment for *Night of the Living Dead LIVE!* which is currently spooking audiences at The Pleasance Theatre, London.

Based on the iconic George A. Romero film, *Night of the Living Dead LIVE!* tells the story of a group of strangers holed up in a farmhouse in rural Pennsylvania. With hordes of the undead approaching, will any of them make it out alive? The show is lit by Nic Farman, who comments: "I hadn't actually seen the film version prior to working on the show but I allowed myself to watch the first 20 minutes. This was so I could get a feel for the style of the cinematography, but also not become fixated on recreating the film on stage from a lighting point of view".

Despite not wanting to be an imitation of the film, the production did remain true to the Romero classic. Nic explains: "The interesting thing about the show is that we've tried to recreate it as if it were a black and white film. The Designer Diego Pitarch has created a monochrome set of the interior of the farmhouse in which the action is set. The costumes are all black and white and the actors are in make up to appear greyscale. My brief was to buy into that concept and to keep us in a black and white world, which was quite daunting, especially as creating a rich colour palette is often part of my work.

He continues: "The first act stays quite faithful to the film, but as the show moves forward, it becomes a number of 'what if' scenarios. As a result, towards the end I was able to start sneaking colour back in as the action on stage gets more frantic and ridiculous. It's been interesting working out how to create certain parts of the show when colour has been stripped away. For example, there are a lot of fire effects through the show outside of the scenic windows so we spent a long time playing with intensity effects with pure white light to achieve those looks".

To achieve his design, Nic approached WL to draw on a range of suitable fixtures. He explains: "We have a number of Martin MAC Viper Performances on this show which are mainly used as a gobo wash in the wonderful pure white they produce. We also use their animation wheel capabilities each time the show 'resets' for the next scenario. Initially I thought the limited colour palette would be restricting but, as the show developed, it became really striking. It came down to trying a number of options, including introducing some blue key light in an attempt to sell the black and white. In the end we pulled all colour for the majority of the show and the quality of the white light output the Vipers have gave us the best results".

He adds: "The key light through the windows and doorways



Photo Credit: © Clare Bilyard

is a combination of Showline SL Bar 640s, Chroma-Q Colorforce 12s and GLP XBar 20s. A number of High End Dataflashes gave me the classic horror strobe which works to reveal a number of the 'Ghouls'. The rig is completed by Martin Mac TW1s which allowed me to be flexible on specials with a nice soft edge. This was really important to give us control of what we were seeing on stage as we stripped back to near darkness in trying to create as scary an atmosphere as possible".

Night of the Living Dead LIVE! runs until 8th June 2019. It has been extremely well received by audiences and has also been nominated for a host of OffWestEnd Awards, including Best Lighting Design.

Nic concludes: "Thanks, as ever, goes to Jonathan Haynes and Chris Delaney at WL for their support throughout. Also, thanks to Production Electrician Sam House, Nick Ward and the rest of the team at The Pleasance who worked hard to ensure the show developed as I hoped".

About White Light

White Light is the complete technical solution specialist offering a range of services including lighting, audio, video, rigging and staging to events of all sizes across the UK, Europe and worldwide.

For more information, visit www.whitelight.ltd.uk.

VOSSLOH-SCHWABE CELEBRATES 100 YEARS IN LIGHTING INDUSTRY

More than 130 years ago, Eduard Vossloh began producing spring washers and clamping plates for fastening railway tracks. By going on to acquire a plant for the production of electrical components in the German town of Lüdenscheid on 7 August 1919, he laid the foundation stone for the by now 100-year success story of the globally operating Vossloh-Schwabe Group.

Journey back in time

The first holders for incandescent lamps – initially made out of porcelain, later Bakelite – were manufactured in 1920. In 1946, Vossloh was the only European manufacturer of holders for fluorescent lamps. Due to a major lack of manpower and full order books, Vossloh built the first production site abroad in Sarsina, Italy, in 1961 – the year Vossloh S.p.A. was founded. In addition to high-quality LED spots and LED solutions, the plant continues to produce lamp holders to this day.

The acquisition of Hermann Schwabe GmbH in the Swabian town of Urbach in 1987 served to round off the product range with electro-magnetic ballasts for fluorescent and discharge lamps. Following the initial public offering of Vossloh AG in 1990, further majority shareholdings were then acquired in Elektrobau Oschatz GmbH & Co. KG for electronic ignitors in 1993 and in Wustlich GmbH & Co. KG for LED modules in 1999. As the only manufacturer of a full range of components for conventional lighting technology, Vossloh-Schwabe is at your service as a systems provider – yesterday, today and tomorrow too.

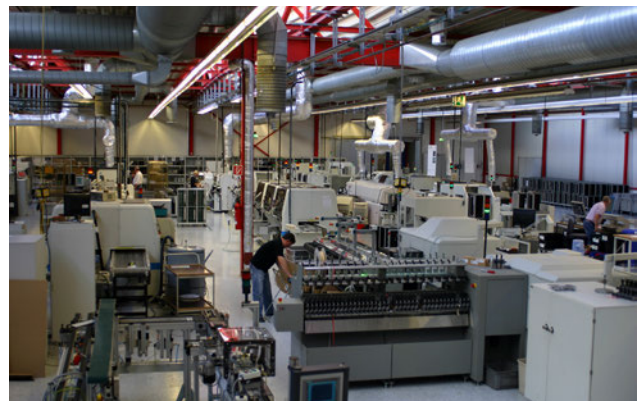
Sights set on the future

In the year 2000, a state-of-the-art production facility was constructed in Lüdenscheid in which high-quality optics are produced by injection moulding in lengths of up to 2 m. An in-house workshop produces matching tools.

Vossloh AG went on to sell its lighting technology division to the Japanese Panasonic Group in 2002. Under new management, the Vossloh-Schwabe Group continued to develop into the LED technology expert it is today. The product range currently encompasses LED modules, drivers and optics as well as intelligent light management system for indoor (Blu2Light) and outdoor use.



VS Factory for ballasts in 1984



VS Electronics Production in 2011

Managing director, Klaus Breisch, is optimistic about the future: "Our ability to transform from a once family-run enterprise into an international lighting technology group goes to prove that we are very well set up as a company. We're ready for a smart future based on innovative technologies." The space needed to do things differently can only be created if thought processes are given the freedom to unfold without limits – indispensable in the face of a quickly changing world. 100 years are merely a start.

WINCOMN TECHNOLOGY ILLUMINATES ANCIENT GLORY OF TANG DYNASTY WITH STUNNING WATERFALL LIGHT SHOW USING CHRISTIE HS SERIES



Photos courtesy of Wincomn Technology

A spectacular light show at the artificial waterfall and rock garden of the sprawling Tang Paradise theme park is casting its magic spell on visitors since its debut, mesmerizing them with vivid, beautiful projections that exude the glamor and glory of the ancient Tang Dynasty (618-907 AD).

Known as the Silver Bridge Waterfall, the 35-meter wide, 16-meter high attraction is among the centerpieces of this picturesque theme park in the ancient city of Xi'an, drawing thousands of visitors daily. The eye-catching projections are accomplished using four Christie D20WU-HS 1DLP® laser projectors installed and commissioned by Christie's longstanding Chinese partner Wincomn Technology, which is also responsible for the venue's projection design.

"We need a high-brightness projection system that can overcome the outdoor conditions to deliver colorful and lifelike visuals that accentuates the storytelling and fulfill the show's overall themes," said Tony Chen, General Manager, Wincomn Technology. "As well, the projectors require a reliable and robust light source that can withstand the rigors of daily outdoor use. After much consideration, we decided that the laser-illuminated Christie D20WU-HS is most suitable for this project."

He noted that the primary considerations when executing projections in an outdoor environment are conditions of the projection surface and its surroundings. During the site survey, the Wincomn team observed that existing environmental conditions such as the uneven terrain and darkish tone of the rockery, as well as the rapid flow of water cascading downhill could affect the quality of the projections. Fortunately, these challenges were short-lived.

"We managed to overcome the environmental conditions with the Christie D20WU-HS, which would otherwise be a daunting task for our team," Chen continued. "Its high brightness of 20,600 ISO lumens produces brilliant visuals, while Christie's patented BoldColor Technology offers enhanced color performance and saturation over standard laser projection. This ensures color accuracy and effectively resolves the dark color tone of the rocky terrain."



Other features, such as the built-in Christie Twist™, made it quick and easy to set up and calibrate unconventional surfaces, allowing a clear and complete projection on rugged landscapes. The projector's small footprint, lightweight and omnidirectional capabilities also simplified the installation process, and all four units remained unobtrusive even after they were housed in two projection towers overlooking the waterfall. On top of that, the D20WU-HS's long-life laser light source offers up to 20,000 hours of maintenance-free operation, ensuring optimal performance and reducing the hassle of maintenance and repair.

The contents of the projection show comprised mainly of flora and fauna featured prominently in Chinese culture, including peonies, flourishing blossoms, butterflies and mystical deer, creating elegant scenes that depict natural beauty and tranquility. Through Wincomn's masterful projection design, the displayed contents blended seamlessly with the flowing water on the rock garden to present a dynamic landscape that adds greater charm and grandeur to Tang Paradise at night.

By combining the existing landscape with the state-of-the-art projection mapping effects to enrich the nighttime display of the Silver Bridge Waterfall, visitors will experience an unprecedented and mesmerizing view.

LED EXPO MUMBAI 2019 TO FUEL NATION'S ENERGY EFFICIENCY MOVEMENT

With major steps taken by the government to promote the usage of LED, the 20th edition of LED Expo Mumbai 2019 will bring the latest trends from over 300 companies to help encourage these initiatives and provide a resourceful platform to manufacturers, importers, distributors and end users. Use of LEDs at residential areas will be further promoted with DELP being proposed by EESL in consultation with BEST and MSEDL.

India has witnessed a phenomenal progress with an annual energy savings of over 3,340 crore kWh*. The burgeoning consumption of LED lights could make India the first nation to use LED for all kinds of lights. With constant measures taken by the government to encourage the use of LED bulbs and technologies, these energy efficient lights are now widely used in commercial sectors, government building, streetlights and even residential areas. Acting as a stimulus to the progress of LED lights in the all the cities and towns of the country, the 20th edition of LED Expo Mumbai will bring over 300 companies offering the latest technologies and advancements to buyers across the country.

The premium show, known for displaying the entire value chain of LED lights and technologies, will have both exquisite and essential LED products from contingents like India, China, Hongkong, Korea, Taiwan, and UAE. Companies like Osram India, Nirvana Lighting, Swingtel Communications, Millennium Semiconductors, Lafit Lighting Pvt, AV Enterprises (Green Life), LTech India Software Systems and Kalon Lighting will present the latest technological advancements that will help set new trends in the booming industry.

With continuous steps taken to encourage the use of LED lights, lamps and luminaires, this technology has exhibited the strongest growth trend amongst all the lighting technologies in the country. Lending his support to India's most premier show, Honourable Minister of State for Energy, Government of Maharashtra shared: "LED based household lights could reduce energy consumption by 88% (as compared to ordinary bulbs) and 50% (as compared to CFLs). In order to promote the use of LEDs in residential areas, EESL in consultation with BEST and MSEDL has proposed the DELP (Demand Side

management based Efficient Lighting Program) in the state of Maharashtra."

He also added: "Our country has seen a considerable progress in the field of lighting technologies and through schemes like UJALA and SLNP, the government has promoted mass production, distribution and usage of LED bulbs. LED Expo Mumbai 2019 will give a great impetus to buyers and companies in the western regions of India to update themselves with various applications which are energy efficient, cost saving and environmental friendly."

Other leading associations supporting LED Expo 2019 Mumbai include Energy Efficiency Services Limited (EESL), Brihanmumbai Electric Supply and Transport (BEST), Maharashtra Energy Development Agency (MEDA), Bombay Suburban Electric Supply Rajdhani Power Ltd (BSES), Solar Energy Society of India (SESI) and Indian Building Congress (IBC).

The progress of LED technologies used in the country has gone notches high starting from lights being just energy efficient to smart lights and app-operated lights that help with the overall development of lifestyle. Surendrakumar Bagde, General Manager, Brihanmumbai Electric Supply and Transport (BEST) shared: "In the metropolitan city of Mumbai, BEST has undertaken the project of replacing about 40,000 HPSV/MH street lamps by LED lights."

He trusts that "LED Expo Mumbai will provide an opportunity for all to double their efforts in spreading the message of importance of LED lights and serve as a platform to educate the people of its advancements and commercial benefits."

The show has been a pioneer force in introducing new trends and technologies to the Indian LED industry. It has successfully recognised the industry's potential and brought in recognised and trusted names from domestic and international markets alike. With continuous rise in the number of exhibitors and visitors each year, LED Expo Mumbai has proved to be an apt event in the lighting arena to exchange and engage in lighting related knowledge and innovations with different stakeholders.

THAILAND SMART CITY SOLUTIONS WEEK WILL BE HELD FROM 28 – 31 OCTOBER 2019

As one of ASEAN's leading business destinations for smart city solutions, Messe Frankfurt in collaboration with Digital Economy Promotion Agency (DEPA) will host the inaugural Smart City Solutions Week in Thailand from 28 – 31 October 2019. Messe Frankfurt's brand shows for the smart city industry – Secutech Thailand, Thailand Lighting Fair and Thailand Building Fair – will showcase innovative smart city solutions, while the focus on digital infrastructure will be at the DEPA-organised Digital Thailand Big Bang show. The four shows will embrace this new theme to serve as a one-stop shop for the latest smart city technology and solutions.

A press conference was held in April, Bangkok, to announce the debut Smart City Solutions Week. Committed to showcasing the best in security, building automation, lighting and digital infrastructure solutions, the line-up of fairs, which kick-off on 28 October, look set to cement Thailand's position as one of the leading hubs for smart city solutions in the ASEAN region.

Mr Hubert Duh, Chairman and Managing Director, Messe Frankfurt New Era Business Media Ltd, said: "Messe Frankfurt is proud to support the ASEAN smart city development. We are confident that local organisers DEPA, Worldex and Exhibiz understand key local market needs and concerns, while Messe Frankfurt shall use its deep-rooted experience in nurturing and growing trade fairs while also leveraging our international network to foster new business opportunities. The synergy created amongst the four fairs will not only enhance the visitor experience but also help to build even more momentum for ASEAN's smart city sector."

Dr. Nuttapon Nimmanphatcharin, President/CEO, Digital Economy Promotion Agency, remarked: "We are looking forward to a fruitful collaboration with all our partners to mark this noteworthy new milestone of the Smart City Solutions Week in Thailand. The adoption of the smart city concept is an undeniable trend for ASEAN cities and we hope that industry

players will take advantage of these integrated solutions and build a networking platform across the smart city ecosystem.”

The 2018 editions of Secutech Thailand, Thailand Lighting Fair and Thailand Building Fair collectively gathered 300 exhibitors from 18 countries and regions and welcomed over 10,000 visitors. With a new show date and position alongside Digital Thailand Big Bang, it is forecast that the Smart City Solutions Week 2019 will enhance visitor numbers and the overall fair experience for the smart city industry.

Thailand Lighting Fair and Thailand Building Fair will concentrate its focus via a new show theme: ‘City + IoT – A sustainable and livable future’. The use of IoT-enabled street lighting supports the development of smart city applications as these smart grids can be used for future public services to enhance the quality of city life. Likewise, buildings that leverage IoT technologies are developing into vital elements of the complex smart city network. Ranging from sensors collecting data to developers building thousands of smart city apps, the IoT movement will facilitate large volumes of high-

quality data to be in the hands of city leaders and decision makers, leading to better quality living environments.

Under this theme, both Thailand Lighting Fair and Thailand Building Fair will present the full spectrum of the smart city concept including digital applications (smart lighting solutions, smart parking and smart buildings), smart technology (intelligent sensors, dimming and control and smart lighting platforms) and smart governance (facility management and smart community features). In addition, to create a sustainable and livable future, the fairs will have an additional focus on energy efficiency and power generation to address ongoing efforts to diversify our energy mix and showcase an array of technology and solutions.

Located at the Bangkok International Trade & Exhibition Centre, Secutech Thailand and Digital Thailand Big Bang will be held from October 28 – 31, while Thailand Lighting Fair and Thailand Building Fair will be held from October 28 – 30.

For more information, visit www.messefrankfurt.com.

SHOWLIGHT 2021 IN FONTAINEBLEAU, FRANCE ANNOUNCED

The next gathering for this quadrennial event will take place on 22-25 May 2021 in the beautiful French town of Fontainebleau which lies 55.5km (34.5 miles) south east of Paris. Famous for its medieval Château de Fontainebleau, a royal and imperial residence for more than 800 years, and surrounded by former royal hunting park, Fontainebleau Forest, Fontainebleau is a picturesque setting full of characterful bars and restaurants which will provide a popular and entertaining backdrop to the main activities of Showlight 2021. It is also a UNESCO World Heritage Site.

The highly anticipated conference will take place in the town’s Théâtre Municipal, directly opposite the Château de Fontainebleau, where delegates can enjoy the varied programme of conference papers delivered by professionals across many lighting disciplines. A small supporting exhibition will take place in the theatre’s foyer and courtyard between papers sessions offering superb opportunities to network and exchange ideas with other lighting professionals. And of course, the event will close with a resplendent Gala Dinner in a stunning – and yet to be disclosed – location!

Being so close to Paris, Fontainebleau is easy to reach, with good connections to airports and Eurostar terminals. So put the date in your diary now and get planning your presentation papers as Showlight will be putting out a call for speakers in the coming months. Demand is always high so book your place early. Booking details will be released closer to the event.

The main sponsor for the event will be the 100-year old French manufacturer of followspots and theatrical luminaires, Robert Juliat. “We are very excited to be



selected as the main sponsor for Showlight 2021,” says François Juliat, CEO of Robert Juliat. “Robert Juliat is celebrating its centenary in 2019 so the fact that we can welcome Showlight and its delegates to our country at this time is very special. Showlight is such a unique event, and Fontainebleau is a perfect location – it is an unmissable opportunity for everyone in the lighting fraternity who is interested in light.”

“We are delighted to start the build-up to Showlight 2021 with the announcement of another lovely venue and a great sponsor,” says Showlight Chairman, John Allen. “It is always a much anticipated event and I know people will be blocking out those dates in their diaries as soon as they see this announcement. Showlight’s emphasis is on sharing knowledge and enjoying the inspiration and variety our industry offers in a networking event without parallel, and our delegates and speakers enter into the spirit of it from beginning to end. Where else do you have the chance to become involved in so many ways, with opportunities open to everyone – delivering talks, networking, learning and meeting a wide variety of people from the most experienced professional to the newest students and innovative manufacturers? It’s an opportunity for all to take a few days out from our busy lives to enjoy the company of like-minded individuals in a beautiful setting.”

Sign up for the mailing list at www.showlight.org, to receive all the latest news as it happens, including booking release dates. Keep your eyes on the press and the website for invitations to present papers and for student opportunities.

For more information, visit www.showlight.org.

OPENING OF NEW ZUMTOBEL GROUP LIGHT CENTRE IN BOLOGNA

Milano, Italy | Dornbirn, Austria – On the evening of 16 April 2019, the Austrian lighting company Zumtobel Group opened its redesigned Light Centre in Bologna covering an area of 450 square metres. Around 200 guests attended the official opening. The conceptual redesign of the Bologna Light Centre has created a customer platform which conveys the experience of light in its various applications and underlines the extensive lighting expertise of the Zumtobel Group and its brands.

“We are delighted to have created a platform for our customers with the new Light Centre Bologna, which shows everything from indoor to outdoor lighting solution. The final location inspires and creates an inviting space to discuss and design lighting solutions together with our customers. It is a place where light can be experienced and it is enormously important to us to be able to convey this experience of light to our customers,” says Karl Oberhollenzer, General Manager Zumtobel Group Italy.

Opening framed by Francesco Iannone & Serena Tellini

The evening event was framed solemnly by a keynote speech by the lighting designer Francesco Iannone & Serena Tellini, Consuline Architetti Associati from Milan, Italy. Francesco Iannone has been working with lighting design and industrial design applied to lighting for 30 years. In 1986, he founded the Consuline office in Milan, where he works with Serena Tellini.

The fascination of light

The Zumtobel Group showcases at the newly designed Bologna Light Centre its broad product portfolio and the expertise of the Zumtobel (Indoor) and Thorn (Outdoor) brands. Light for specific applications, professional lighting solutions and the related services.

The idea of the Zumtobel Group Light Centres was raised more than 25 years ago based on the philosophy to establish a place where people can experience the best light for a particular application – this is also the philosophy that the new Light Centre in Bologna pursues. With the recent opened light centres in Vienna, Paris, Zürich and now Bologna the company wants to step in into a new area of customer dialogue and interaction. For March 2020, the next milestone in the company’s history is just around the corner, as the new Light Forum at the headquarters in Dornbirn will open up its doors.



The conceptual redesign of the Bologna Light Centre has created a customer platform which conveys the experience of light in its various applications and underlines the extensive lighting expertise of the Zumtobel Group and its brands.



On the occasion of Milan’s Design Week, EOOS designer Harald Gründl from Vienna, Austria, presented the new Zumtobel SUPERSYSTEM integral collection in the prestigious setting of the Royal Room of the Central Station in Milano on the evening of 12 April 2019.

LIGHTING FOR SCOTTISH PARLIAMENT DEBATING CHAMBER HONORED WITH IALD AWARD OF MERIT KSL



Luminaries of the lighting profession gathered at the elegant Crystal Tea Room in Philadelphia, PA USA on 22 May to honor the winners of the 36th Annual International Association of Lighting Designers (IALD) International Lighting Design Awards. Twentythree projects from 12 countries were on display—including exteriors, interiors, workspaces, museums, hospitality sites and a place of worship. This year's winners represent some of the most innovative and inspiring architectural lighting design work found anywhere in the world.

The lighting design for the Scottish Parliament Debating Chamber in Edinburgh, Scotland UK by KSLD | EFLA Lighting Design took home an IALD Award of Merit. On behalf of the project team, Kevan Shaw received the IALD Award of Merit on 22nd May at the 2019 IALD Education Trust Benefit Dinner + 36th Annual IALD International Lighting Design Awards ceremony in Philadelphia, USA. KSLD | EFLA Lighting Design wishes to extend its congratulations to all who worked on this remarkable project.

Kevan Shaw said, “I am extremely proud to receive our first IALD Award of Merit for the Scottish Parliament Debating Chamber. We are of course also extremely proud of this project and the international recognition it has received for excellence in lighting design.”

The project was judged as a winner in a field of more than 200 entries and has been formerly recognised at awards ceremonies across the globe. Significantly in 2018, the project was winner of the First Prize for Lighting Design at the Codega Awards; Highly Commended in the Office, Education and Healthcare Lighting Project of the Year category at the Lux Awards; Commended in the Workplace category at the Lighting Design Awards and Commended in the Lighting category at the Scottish Design Awards.

The soft light that lends a healthy glow to parliamentarians and visiting guests comes from the geometric, visually interesting LED lights gracing the entirety of the chamber.

Judges called these bespoke LED lights a “technically brilliant solution” to the challenge placed before KSLD—how to light a room that functions effectively as a TV studio and an accessible public space.

The first step was eliminating the old metal-halide lights as they were expensive, difficult to maintain and obsolete. New HDTV cameras require upgraded lighting to meet broadcasting standards. With a mere six weeks to develop and install

the lighting design, KSLD completed multiple site trials and time-lapse daylight studies to determine that the best solution, and one that would honor Enric Miralles’ original architecture, was a custom suspended luminaire.

The design integrates suspensions and concealed wiring into the complex ceiling structure. The new LED arrays have custom aluminum extrusion, bespoke precision turning, multi-axis adjustment, acrylic design, stringent output targets, individual controllability, deep dimming, HD broadcast compatibility and an extended lifetime. Based on where current members of parliament are seated as well as glazing studies of the windows and considerations of where fixed louvres can be placed, a diagram was created to manage the placement of all the bespoke LED arrays. The layout and heights appear random but it achieves the necessary lighting distribution.

Lighting is soft and there are supplemental LED spotlights for front fill as needed for broadcasting. The entire system is controlled through DALI controls which saves 60% on energy over the previous scheme. Ultimately KSLD’s unique and beautiful solution creates a more comfortable environment for parliamentarians and a more sustainable design.

About The IALD International Lighting Design Awards

The IALD International Lighting Design Awards program is the longest-running international awards program recognizing excellence in architectural lighting design. The program honors lighting design that reaches new heights, moves beyond the ordinary and represents excellence in aesthetic and technical design achievement. For complete details and high-resolution photos of this year’s awardwinning projects, visit iald.org/awards.

About The International Association Of Lighting Designers (IALD)

The International Association of Lighting Designers (IALD), established in 1969, is an international organization supporting a network of more than 1,450 lighting design professionals who satisfy its rigorous qualification process. IALD strives to set the global standard for lighting design excellence by promoting the advancement and recognition of professional lighting designers, cultivating the universal acknowledgement and appreciation of the Power of Light in human life.

For more information, please visit www.iald.org.

show preview

Guangzhou International
Lighting Exhibition 2019

9th – 12th June 2019
The China Import and Export Fair Complex
Guangzhou, China



As the most influential and comprehensive lighting and LED event in Asia, the 24th edition of Guangzhou International Lighting Exhibition (GILE) returns from 9 - 12 June 2019 at the China Import and Export Fair Complex in Guangzhou, China. 18 state-of-the-art exhibition halls (covering 190,000 sqm gross area) will gather over 2,200 companies to showcase comprehensive lighting technologies and the latest LED technology solutions, meeting sourcing needs and providing a platform for the exchange of market information and exploration of new business opportunities.

Ms Lucia Wong, Deputy General Manager of Messe

Frankfurt (HK) Ltd commented on the upcoming fair: "Over the past 23 years, we have witnessed countless successful business activities. For exhibitors and buyers from around the world, GILE is a one-stop sourcing platform, promoting the development of new markets by encouraging cross-industry procurement. As a new era of lighting dawns, illumination will integrate different technologies, sectors and equipment, inspiring the production and design of new lighting products. During all of this we will continue to serve as a leading exhibition for the lighting industry."

GILE will showcase a comprehensive range of products



and technologies, covering all aspects of the industry chain, including manufacturing, technology research and application. As one of the most influential lighting exhibitions in Asia, prominent lighting companies from around the world have confirmed their presence at GILE 2019.

THINKLIGHT: Envisage the Next Move

Guangzhou International Lighting Exhibition's concurrent event programme once again returns to bring some of the most influential lighting industry experts to the heart of the show. Designed to highlight and provide insight into some of the most pressing issues facing the lighting community, this year's programme will encourage debate and collaborative thinking via a series of panel discussions held on the main Pearl Promenade stage.

These panel discussions will gather leading domestic and international experts and thought leaders on stage to discuss what is next for the lighting industry. Whether it's the exciting possibilities of a new era of IoT and 5G or to evolving digital technologies that allow us to reinvent the ways in which lighting is designed, installed and perceived, the discussion panels will be insightful and not to be missed.

Two parallel sessions in the main halls will facilitate discussion about possible directions that industry players may take over the coming years. The "Leap Forward" session will examine technological innovations like micro LEDs, UV, IR and LiFi, new materials and applications as well as insights into the fast-approaching 5G era.

The second parallel session "Back to Basics. Illuminate Ingenuity" is designed to encourage the lighting industry to not neglect its core purpose - effective and inspiring illumination. Aspects such as human-centric lighting and high-quality colour consistency and rendering will take priority in order to maintain and cultivate new standards of excellence.

Looking ahead to GILE 2019, Ms Wong added: "A new era, a new lifestyle and new lighting – this concept injects new vitality to the industry. By envisaging the next move of the lighting community together, it is hoped that we can all embrace this renewed energy, take a moment to consider lighting and provide new value for illumination. GILE will strive to work together with the lighting industry to produce better lighting and consequently a better life for its users."

The Guangzhou International Lighting Exhibition is a part of Messe Frankfurt's Light + Building Technology fairs headed by the biennial Light + Building event.

For more information, visit <https://guangzhou-international-lighting-exhibition.hk.messefrankfurt.com/guangzhou/en.html>.

show preview

RiX 2019 Malaysia

17th – 20th October 2019
Kuala Lumpur Convention Centre
Kuala Lumpur, Malaysia



Rising as Malaysia's only platform for interior design for the third year, the Reka Interiors Exhibition (RiX) is the perfect platform to inspire and cement strategic partnerships in this trade focused exhibition.

Jointly organised by the award-winning exhibitions organiser C.I.S Network Sdn Bhd (C.I.S) and MIID Reka Sdn Bhd (MRSB), a subsidiary of Malaysian Institute of Interior Designers (MIID), the exhibition will make a comeback to drive the only uniquely curated design show by designers for designers in the Kuala Lumpur Convention Centre, Malaysia from 17-20 October 2019. This year, RiX focuses on the commercial worth and

marketability of innovation-driven designs. Bridging the aesthetics of interior design with its commercial possibilities, the elites of the industry can dip into the RM16 billion interior design industry in Malaysia with a projected growth rate of 4.5%.

Broadening business horizons and helping designers, businesses and brands, RiX brings together the leading voices from the design fraternity – with over 6,000 visitors such as interior designers, product designers, decorators, buyers, architects, developers, renovation specialists and business owners in this rapidly thriving industry.



With this year's theme "Bridging designs to businesses", the exhibition seeks to give businesses that X Factor by helping the community prepare to experience designs that creates culture and shape values.

As RiX continues to create markets, grow products and build networks, visitors be it the ones from the design or business guild will gain an enriching experience through the many highlights of the exhibition and to hear from the experts speak to them – from designers, suppliers to retailers in a marketplace where the great minds of the design luminaries merge to share and exchange ideas to challenge, transform and shape the industry's opportunities.

From students to professionals, the show brings together top guns within the interior design industry locally and internationally to be a part of the conferences, townhall sessions and quick-fire talks that will feed the mind and shape your thoughts and ideas – helping one think out of the box and approach problems and designs in new, innovative and conceptual reasoning in a more confronting manner.

Bringing products and design to a new cutting edge and creating a world-class competition through its signature Design Installations, visitors can also feast their eyes and imagination on nine masterpiece showcases where nine celebrated designers and 12 renowned brands being paired to breathe new life into the products and materials sourced for the interior design universe.

Come experience an exhibition like no other. The world of design is evolving in new and unexpected ways and change is the only constant. Gear up for RiX 2019 and be the next rising star of the interior design industry this 17 – 20 October 2019.

show review

Prolight + Sound 2019

2nd – 5th April 2019

Festhalle Frankfurt
Frankfurt, Germany



Photo Credit: Jochen Günther

A week full of music, entertainment, business and inspiration ended on Saturday evening with a concert given by Gregory Porter and the Neue Philharmonie Frankfurt orchestra in the 'Festhalle'. At Musikmesse and Prolight + Sound, artisanry met high-tech, violins met virtual reality and digital networking met personal encounters. The accompanying Musikmesse Festival not only presented highlight concerts by Samy Deluxe, Mousse T. & Glasperlenspiel, Tony Carey and other stars at the Exhibition Centre but also filled around 50 clubs and hotels in Frankfurt with music. At the new Musikmesse Plaza, music fans came into their own after the trade fairs with a pop-up market including direct sales and numerous events on Saturday.

A total of more than 85,000 visitors made their way to Messe Frankfurt while around 25,000 music fans enjoyed Musikmesse Festival events at a variety of clubs and hotels in Frankfurt. The greater emphasis on the exchange of ideas and information between specialists from the music and event business resulted in a high proportion of trade visitors – 76 percent – 45 percent of whom were top managers. Over half of the trade visitors came from outside Germany, from 130 countries from Iceland to New Zealand.

"In five days, we have revealed the direction being taken by consumption and production in the music and entertainment business: towards greater dynamism,

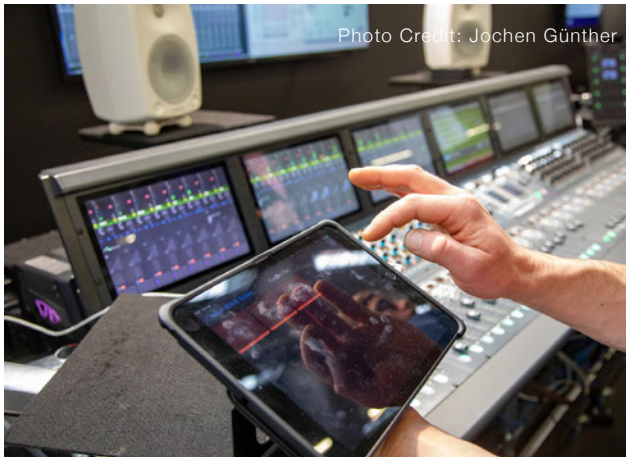


Photo Credit: Jochen Günther



Photo Credit: Michael Zargarinejad



Photo Credit: Petra Wetzel

diversity and digitalisation. This was not only demonstrated by the large number of exhibitors and artists at the Exhibition Centre but also throughout the whole city. Together with partners from the industry, the creative business and the music scene, we will continue to take up the complex challenges facing the sectors and generate value added for them with our two trade fairs", says Detlef Braun, Member of the Executive Board of Messe Frankfurt.

Prolight + Sound presents the event sector in the best light

Prolight + Sound illustrated the innovative strength of the entertainment industry with spectacular product presentations and an even more extensive professional-development programme. Clear was the trend to IP-based transmission technology: complex media installations and stage set-ups are increasingly being controlled via central networks and thus promoting the spread of the Internet of Things in the event business. "The trend to connectivity is now really gaining ground and opening up completely new perspectives for us and our sector", says Gunnar Eberhardt, Head of Entertainment & Architecture Lighting' at Osram GmbH. "We are very pleased with this year's Prolight + Sound. It is the world's most professional fair for the entertainment sector and has the broadest audience of visitors. With our products, we cover all parts of the entertainment-lighting segment: from show and theatre, via museums, to façade lighting. Here in Frankfurt, we meet the right people and customers for all areas of applications, and that from all over the world."

A particularly successful part of the complementary programme of events proved to be the 'Immersive Technology Forum' where visitors could take part in lectures and live demonstrations revolving around technologies for virtual and augmented reality, immersive audio, holography, 3D mapping and other spectacular entertainment trends. "For us, the Immersive Technology Forum was an excellent opportunity to showcase our immersive sound system to the trade visitors at the fair", said Mary Beth Henson, Head of Communications at L-Acoustics. "Business at the fair was really very good. Highly successful was our new demonstration room, where we welcomed more customers in the first two days than in the whole of last year's fair."

LED technology has been a vital driving force for growth in the sector for many years – and there seems to be no limit in sight on the positive development of this market segment. For example, suppliers of big screens and video walls benefited from the impetus of the sector at Prolight + Sound: "We are more than pleased with the result: our exhibition stand was very busy on all four days and we welcomed numerous international trade visitors. Particularly impressive was the high visitor standard. The advisory and sales discussions showed clearly that Prolight + Sound is the right place for us and the ideal business networking platform. We will certainly be back again in 2020", said Christoph Pfäffle of Unilumin Germany GmbH.



Grounded light installation

A Festival in Light

Parrtjima

Sydney, Australia

Photo Credits: AGB Events

AGB Events today announced the successful conclusion of its involvement in Parrtjima: A Festival in Light which the company curates and produces on behalf of the Northern Territory Major Events Company - playing a key role in bringing the unique Indigenous art festival to life.

Parrtjima (pronounced par-chee-ma, translated as “lighting up”) is the only authentic First Nations festival of its kind, showcasing the oldest continuous cultures on earth through the newest technology. It is also the fastest growing event in Australia. In Australia, ‘First Nations’ describes the aboriginal people – the first inhabitants of Australia - which includes over 500 different clan groups or ‘nations’ around the continent, many with distinctive cultures, beliefs and

languages. The United Nations declared 2019 to be the International Year of Indigenous Languages and AGB Events highlighted an element of this theme in each of the installations they brought to life.

Held across two event precincts over 10 nights, the free event included a public program of interactive workshops, music, films and talks.

Parrtjima is set against the backdrop of the 300 million-year-old MacDonnell Ranges in Australia’s Northern Territory. AGB Events engaged the regular First Nations consultant, Rhoda Roberts AO (who holds the Medal of the Order of Australia), to curate the festival for a third year. Parrtjima celebrates new ways artists can push the boundaries of

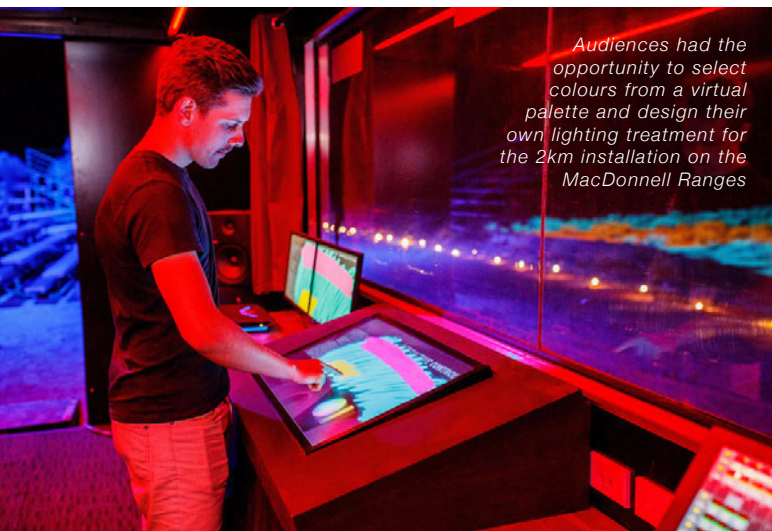
how indigenous art is presented, while staying true to the ancient philosophy of connection and country. The results are visually mesmerising, thought-provoking, and create a cultural experience unique in the world.

The Northern Territory Government reported that this year's Parrtjima was a huge success, attracting 25,623 attendees over 10 nights – an amazing 25 per cent increase on last year's event, reinforcing the uniqueness of the event, and its ability to capture the imagination and interest of a national and international audience.

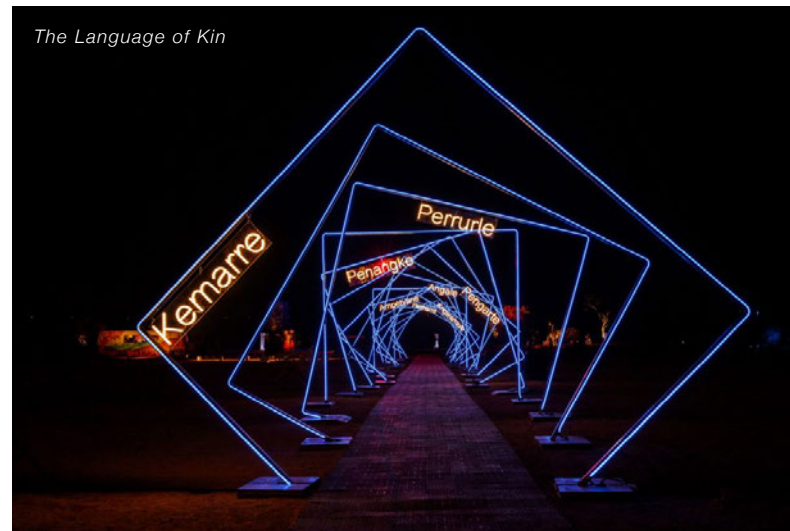
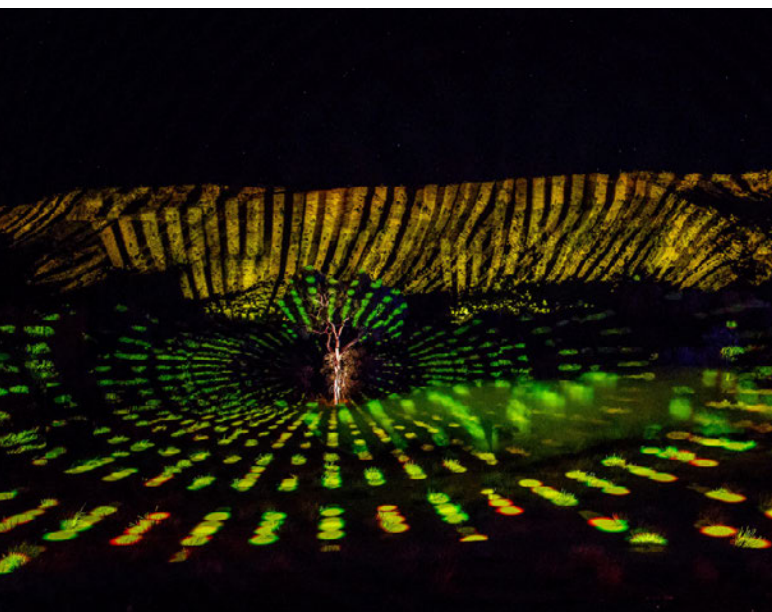
"We specialise in creating and producing events that cross cultures and that celebrate creativity and technology," said Anthony Bastic, CEO and Founder of AGB Events. "As such, it was wonderful to work with Rhoda Roberts, who is full of hugely imaginative ideas – and to turn her vision into a reality.

"AGB's experience in curating and producing Vivid Light Sydney, now the world's largest light festival, allowed us to design the world's first Indigenous light festival. Having concluded our fourth year, AGB is proud that Parrtjima is now the fastest growing event in Australia," added Bastic.

Among the numerous individual showcases AGB Events helped devise and deliver were 'The Language of Country', a theatrical experience unlike any other as two kilometres of the MacDonnell Ranges acted as a canvas for a series of stunning lighting effects, celebrating the beauty, uniqueness and survival of the ancient landscape. "Crowds were mesmerised by the local stories played out on the 300-million-year-old natural canvas and the voice of the land speaking through an image of a face appearing in a desert gum tree," enthused Bastic.



Audiences had the opportunity to select colours from a virtual palette and design their own lighting treatment for the 2km installation on the MacDonnell Ranges



The Language of Kin



Todd Mall

'The Language of Colour' saw AGB Events activated a large interactive industrial container where visitors could control the lighting on the landscape in front of them. By selecting colours from a virtual palette, and using their fingers to colour in the scenery, visitors witnessed the landscape being illuminated in real-time through the magic of projection and their imaginations.

Another installation conceived by AGB Events called The Language of Kin saw visitors welcomed by an illuminated tunnel that honoured local Arrernte people by celebrating their kinship system. The immersive light installation featured an accompanying soundscape, creating a surreal and educational experience that allowed visitors to explore and experience the complex and meaningful system of kinship.

"Of course, there were huge challenges involved – but that's what made the project so exciting and so rewarding," continued Bastic. "We have to temper our imaginations with what we know technology can deliver – like illuminating two kilometres of mountain range, which involved creating a light show of enormous scale. But: we've become well known for pushing the boundaries, and we did that again: our network of trusted audiovisual partners is an enormous asset for us. Parrtjima was a huge success – and it was a privilege to be able to contribute to that success."



Sook Siam

Bangkok, Thailand

Client: Siam Pivat Company Limited
 Lighting Design and Solution: Lighting & Equipment Public Company Limited
 Location: ICONSIAM Charoennakorn Road, Bangkok, Thailand

In November 2018, a fascinating enormous shopping-mall project, Icon Siam, was introduced in the historical area Chareaonakorn on the bank of Choa-Phraya River, bringing a novelty shopping experience to both local people and tourists.

On the G floor of the mall locates one of the most inspiring highlights, Sook Siam, a 1100 sqm. area retail space in the authentic style of Thai market. This "Co-Creation" retail space, also known as 'Town of the Amazing Thai Charm', combines creativity and products while showcasing Thai cultural heritages such as culinary, art, handicraft, medicine, performing art and play from four regions of Thailand. Retail spaces and stores are represented in wooden Thai house with public area for exotic performance and temporary exhibitions.

In this turnkey project, L&E provides lighting solution in public areas. The original idea was to evoke a sunset market ambience into a wholesome experience that the visitors, not only see, but feel. Two types of lighting are perfectly applied to this project in a different function. There is entertainment lighting which gives mood and experience as well as general lighting for overall brightness and lighting up structures. Total solution to this project does not mean merely supplying lighting products and installation, but also facilitating an all rounded lighting solution that integrates client experience to bring them greatest satisfaction.

First, the original of lighting drawing and design is studied and developed for a month before transforming it into a vision that all parties understand. As this project spans a





Entertainment light was added in order to accentuate the City Gate, highlight of Sook Siam.



In Sook Siam, there are 16 artist columns. Each column was designed by famous local artist from 4 regions of Thailand to show specialties of each region. One special column can't be lighted as by accent lighting from ceiling as other fifteens. The solution was provided by adjustment of lamp location and lighting angle.



Additional line lighting along Naka staircase helps human eyes to adjust from brighter area to gloaming of Sook Siam as it's the concept of sunset market.



large area, divided into 4 main parts by bringing the unique cultures of Thai Architecture House to represent 4 public sectors of Thailand, all lightings need to be controlled from the centre.

There are many techniques applied to this project. The first step of drawing development is necessary. Lighting designer and lighting engineering team carefully select suitable lighting products and equipment as well as lighting scene that makes people and tourist feel like they are walking in a sunset market. Lighting control system is also applied and linked to the center via WIFI network which entertainment lighting and general lighting to be set at the same time.

L&E is also concerned with commercial availability and cost management. Their biggest challenge was to modify the lamp and fixtures in order to attain the best results. When the project was initially completed, there was the concern that the original design appeared darker in comparison to other areas of the shopping mall. Worried about the ability of the human eyes to adjust from a brighter to darker environment and the risk of accident, the client requested for an enhancement of overall brightness in Sook Siam.

The re-design process started with the general lighting – working with the M&E team to reposition and increase lighting fixtures to increase brightness. The part of lighting fixtures to light up those design structures of each sector are carefully added, in consultation with the architect who is responsible for designing each sector – especially with ideas on how to accentuate and show the beauty of the City Gate and Thai Architecture House.

Sook Siam can be regarded as a breakthrough project of L&E, because it is intricately designed down to every detail, as well as its enormous size. It is their hope that everyone who visits will be impressed and have an unforgettable memory of this place.

A symbolic sculpture from ghost festival, Phi Ta Khon, is used to represent the festival and beliefs from north-east of Thailand. Uplighting can make it more mysterious and spookier. However, calling from floor is not suggested for this case as it's located too near to a pond and safety concern must be taken in account. Thus, position of lighting was changed to downlighting.



Versatile and Smart Office Lights

Photo Credits: © ERCO GmbH, www.erco.com
Photography: Sebastian Mayer

Communications agency MAI Public Relations in Berlin-Kreuzberg upgraded with new versatile and smart office lights, Jilly downlights, from ERCO.

Modern office lighting with design quality

For a long time, wide distribution fluorescent lamps were the economically attractive but extremely unsatisfactory lighting solution in the agency's offices. In a working world in which people are focused on, light must meet design requirements as well as normative ones. The new lighting solution from ERCO with LED technology combines horizontal general lighting and wallwashing within a perception-oriented lighting concept. General lighting provides sufficient light at the workplaces, enables good visual comfort and achieves pleasant facial illumination. Illuminated vertical surfaces ensure a bright spatial impression and balanced contrast conditions for work on screens.





Jilly downlights

The concept was implemented with Jilly downlights for track (13W) with extra wide flood light distribution and Optec spotlights (12W) with wallwash distribution. Jilly downlights for track represent a completely new type of luminaire, combining the flexibility of spotlights with the high visual comfort of downlights. The view into the Jilly from the side is almost magical, because thanks to excellent glare control it almost gives the impression that the luminaire is not switched on at all. The light only really becomes appealingly perceptible upon horizontal surfaces such as desks and shelves. The neutral white light colour of 4,000 Kelvin has a stimulating effect and forms the counterpart to natural daylight. Lucy task lights also ensure sufficient brightness on the work surface, e.g. for concentrated work in the evening hours.



Optec spotlights

New freedom of movement for the future

Flexibility and adaptability determine the everyday life of communications agencies, as is the case at MAIPR. Owner Matthias Mai also expected such characteristics from the new lighting solution for his agency. With ERCO track as the infrastructure, the luminaire installation is not only quick and easy but can also easily be adapted to the office layout. The Jilly downlights can be repositioned and fixed in the track in just a few simple steps according to orientation of the workstations in the room.



Lucy task lights

Individual lighting control thanks to Bluetooth-capable luminaires

The Berlin agency MAIPR is representative of many other companies with a need for a scalable lighting solution. The example shows how smart infrastructures enable a contemporary use of space. Each employee can individually determine the lighting level at their own workstation. ERCO's lighting solution can be intuitively controlled by smartphone or tablet via Casambi Bluetooth. In addition to control via daylight sensors and presence detectors, pre-programmed light scenes can be called up and individual luminaires addressed.

This is of high value especially for the various visual tasks in team meetings, concentrated text work or research. The light can be controlled via the free Casambi app for iOS and Android mobile devices. For seamless communication and intuitive operation, ERCO has integrated the Casambi Chip into the control gear of its luminaires. At the end of a working day, the luminaires can of course also be switched off "classically" via a Bluetooth-capable wall switch.



Fairmont The Queen Elizabeth

A lighting ecosystem worthy of this emblematic location



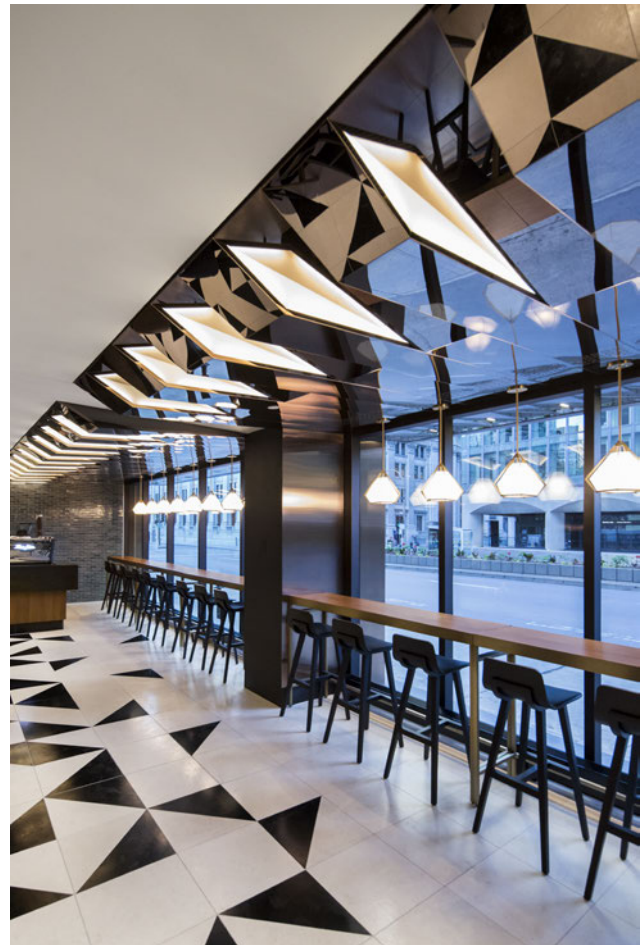
Company: Lightemotion
City: Montreal, Quebec
Client: Ivanhoe Cambridge / Fairmont
Architects / Designer: Architecture 49 + Sid Lee
Photo Credits: Stéphane Brügger
Category: Hospitality

For the Fairmont The Queen Elizabeth hotel, the satisfaction of guests is the top priority. This commitment, upon which the hotel's reputation is built, was the inspiration behind the lighting project completed by Lightemotion. The project was certainly ambitious. Updating without losing the original character, subtly making the space shine and transforming the lighting from secondary convenience into a centrepiece of this spectacular modernization required a blank slate and a collaborative approach with Sid Lee Architecture, a firm with which the Lightemotion team has already worked on a number of projects.

A sensory approach

The conceptual approach used by Lightemotion was inspired by the Fairmont The Queen Elizabeth's unwavering dedication to the comfort of its guests. "We created a sensory roadmap based on the sensations we wanted to evoke in each guest. The approach is quite theatrical, where every moment and each space recall a different facet of wellbeing." They wanted to create visual comfort, but they also paid attention to the sensations that the lighting would elicit. The crux of this concept, which allows guests to enjoy an impressive series of unique experiences, is the invisible sources of light.

You don't see the light source anywhere, which gives the space the theatrical ambiance that the designers were seeking. Recessed lighting with an invisible source, lighting concealed at the bottom of staircases, behind the edges of the reception furniture or around the ceiling. Lighting with an architectural touch, playing a role that we would more easily attribute to a bank of floodlights, ceiling or wall lights. Throughout, the soft lighting breathes elegant opulence,









without being ostentatious, and embodies the quest for modernity that is both timeless and sleek, providing a soothing sense of comfort from the foyer through to any one of the hotel's 950 rooms.

Lightemotion deeply appreciates the openness demonstrated by the developer, Ivanhoé Cambridge, as well as the incredible synergy and attentive ear of the Sid Lee Architecture team which, by making lighting a cornerstone of this project from the very first draft, produced a truly sublime final result.

President of Lightemotion, François Roupinian says, "A hotel is an ecosystem composed of various spaces that meet diverse needs. For The Queen Elizabeth, we wanted to create a web of light – a series of interrelated concepts to provide the link between each of the hotel's spaces. We wanted to tell a story."

I 1411 Crescent Street

Quebec, Canada

Client: BTB Real Estate Investment Trust

Project Completion: December 2018

Photo Credits: Concept Illumination





Located at one of the busiest retail intersections in Montreal's downtown core, 1411 Crescent is a beautiful art deco structure built in 1934. Four floors of offices sit above retail space on the northeast corner of Ste-Catherine Street. BTB Real Estate Investment Trust purchased the building in 2018 and with its own team growing, chose to move its company headquarters to the new space. They appreciated the charm of the building, and its ideal location in the Golden Square Mile.

To signify this important move, BTB REIT sought to enhance the building's façade to make it more impactful on this vital city block. At the time of purchase, none of the exterior lighting was functioning, so the building was unremarkable at night. BTB REIT wanted to use lighting to highlight this architectural gem and approached the lighting experts at Concept Illumination to propose a solution.

All parties agreed the best option would involve uplighting the facade columns, but the challenge was creating a consistent look because the columns themselves have two different widths. Concept Illumination recommended the installation of architectural linear LED graze fixtures; for the narrower 3 ft columns, a 1 ft linear graze, and for the wider 6 ft columns, a 4 ft linear graze. Both luminaire sizes provide one foot of give on each side of the light beam. The result is an even, single band of light shooting up each column, delivering a uniform look to the building and ensuring there is no residual glare on the neighbouring windows.

In terms of colour, Concept Illumination selected a 3000K static white for the project. It was important to use a warmer light on the older building to enhance its art deco features, without overpowering them. Selecting the right beam angle was also instrumental in the success of the final lighting design: each linear LED luminaire has a 9° x 9° beam.

Daniel Herz, who headed up the project for Concept Illumination, explained: "The tight 9° band of light (side to side) ensures there is no light spilling out on the nearby windows. And a similar 9° band (front to back) means the light is projected higher up the building."

The new lighting successfully highlights the unique architectural elements at the top of each column. Herz said they were equally pleased with the resulting effect near the LED fixtures themselves. The lighting catches and enhances the carved features at the base of each building column, and also lights up the banners that are affixed at the first floor office level.

Installation was completed in two phases over the course of two days. Phase I involved the removal of the thirty existing halogen fixtures and the installation of the twenty new LED luminaires. Phase II saw the completion of the wiring.

Herz said the final effect is striking. "No matter at what angle you approach the building, it really stands out in its elegance. By working with the existing dimensions and architectural elements, we have been able to deliver a result that honours the historical significance of the structure."

"We are really proud of the new lighting," said David Barbarush, Property Manager for BTB REIT. "The building is illuminated in a very charming way; it looks quite warm and natural."

Barbarush noted that they have had great feedback from employees as well as other building tenants and clientele. "Our president, Michel Léonard, is also extremely happy with the final product. It's great for the image of our company." ■





I Tilburg Bus Station

Tilburg, Netherlands

Client: City Council Tilburg

Architect: architectenbureau cepezed, Delft

Structural Engineering: IMd Raadgevende Ingenieurs, Rotterdam

Consultant Mechanical & Electrical Engineering: Nelissen Ingenieursbureau b.v., Eindhoven

Consultant Building Physics, Fire Safety And Sustainability: Nelissen Ingenieursbureau b.v., Eindhoven

Landscape Architect/Urban Planner: Atelier Quadrat, Rotterdam

Lighting: Atelier LEK, Rotterdam

Main Contractor: BAM Infra bv, Gouda

Contractor Steel Vonstruction: Buiting Staalbouw, Almelo

Contractor Installations: Hoppenbouwers Techniek, Udenhout

Effe Roof: Buitink - Technology, Duiven

Design Phase: October 2016 – September 2017

Construction Phase: March 2018 – March 2019

Length and Width | gfa Building: 160 m en 30 m (at widest point) | 108m² bvo

Sustainability: 250 m² of solar panels on the roof; yield = NOM (zero use on the electric bill)

Photography: cepezed | Lucas van der Wee





Recently, the new bus station in Tilburg was taken into use. Just like the renovation of the train station and the new bicycle parkings in the railway zone, the bus station was designed by cepezed architects. The new public transport facility generates its own energy and its design is thoroughly integrated. The new bus station is a part of the large-scale revitalization of the Tilburg public transport hub. It is fully tailored to the comfort of the travellers and to a clear and pleasant traffic flow. The facility is situated on the west side of the train station, roughly at the place that also occupied the former bus station, but with the location of the former Tilburion apartment block included on the far west side.

Minimalistic circuit

The basic setup consists of a series of very thin columns with an evenly minimalistic awning structure on top of them. The construction forms a triangular circuit with a length of over 160 meters and an open space in

the centre. The bus positions are arranged around the outer side; six for boarding and one for deboarding. The awning circulation runs from 14 to 30 meters width in total and has two offsets in its contour. These are primarily functional and align with the urban context, but visually, they also resonate elegantly with the monumental roof structure of the train station. This also has an articulated structure and moreover seems to float, just like the bus station awning. The setbacks divide the overall structure into three segments. In the centre of every segment, there is green plantation surrounded by a sitting edge for the travellers. On the wide end of the circuit, the centre additionally contains a pavilion. This houses a staff canteen for the bus drivers, a public transport service point and a commercial space that has to find its function yet. An elevated terrace adjoins this commercial space.

Awning with pv and etfe

The spacious awning all around fully covers the bus platforms and additionally part of the buses. Thus, travellers can always board and deboard sheltered and protected from the rain. The structure consists of a steel framework covered with ETFE-foil. The lighting is fitted above

this foil. During the day, the awning filters the sunlight, while during the dark hours, it becomes one large and spacious lighting element that strongly adds to the travellers' feeling of safety.

250 m² of solar panels lie atop of the awning. In strong daylight, these cast a shadow pattern on the ETFE that makes the travellers aware of their presence. The panels supply sufficient energy for all functionalities of the bus station, including the lighting of the awning, the digital information signs, the staff canteen and the public transport service point. The commercial space has its own energy circuit and energy meter.

Integral materialisation and detailing

Based on considerations regarding aesthetics as well as comfort, functionality and the use of materials, a lot

of attention was paid to a setup, materialization and detailing that is as elementary as possible. Cepezed conceived a clear and pure system for the bus station and engineered it meticulously. For example, the thin columns composed of steel plates and strips also contain water drainage and electric cabling. The S.O.S.-button and intercom are also integrated into one of the columns. The folded sheet steel that functions as the central load-bearing stability beam also functions as a gutter. The lighting of the terrace adjoining the pavilion is integrated into the beams spanning the awning structure at that point.

The sitting edges of black pigmented concrete contain a number of seats executed in strip steel with integrated heating. The drainage holes in the load-bearing gutter are also used for fixation of the stretched ETFE-foil, while



the digital information displays are invisibly fastened. The pavilion has a function in the overall stability of the awning. Also, movement sensors have been integrated into the steel edge of the awning every 14 meters. These respond to the presence of busses and people so that the lighting is sufficient in every situation while the use of energy is kept to a minimum.

Inclusive, low maintenance and future proof

The bus station was also designed for inclusiveness. For example, the elevated terrace can be reached by wheelchairs through a ramp and the handrails between the terrace and the platforms have been provided with braille signing. The ETFE foil of the awning is self-cleaning and hardly needs any maintenance. For service on the solar panels and electrical equipment, the awning circulation is easily accessible via the pavilion and a

walkable cable gutter. The overall unornamented design with a minimum of edges and corners reduces the costs for cleaning. Additionally, for the future, the bus station is already prepared for the placement of extra electrical equipment that can quickly charge electrical busses.

About cepezed

cepezed is a frequently decorated architecture office with a wide range of projects both in and outside its home country The Netherlands. Assignments address high-profile and sustainable projects such as the revitalization of State Office De Knoop, the circular catering pavilion The Green House, the dismantlable Temporary Courthouse in Amsterdam and the new pier at Schiphol Airport, but also e.g. state-of-the-art laboratories, infrastructure and ingenious educational buildings. ■



Oakland University Hillcrest Hall

Oakland, California

Specifier: Peter Basso & Associates – Gerard Hentrich

Design/Build Contractor: Fred Calandrino/Brian Campbell (Advantage Electric & Controls)

Electrical Distributor: Sue Morgan/Lenny Lovalvo (Caniff Electric Supply)

Luminis Agent: Clarus Lighting & Controls

Photo Credits: John D'Angelo

Project Completion: September 2018





When you enter Hillcrest Hall, the latest resident building on the campus of Oakland University, it is impossible not to be awe struck by the lighting lining the corridors. Luminis' Lumistik family of LED products leads the contemporary lighting scheme that carries through to other areas of the Rochester Hills, Michigan residence. Lumistik luminaires illuminate the study and lounge areas on the top floor and basement, and Luminis' Aramis pendants the 400-seat cafeteria and dining hall.

The whole architecture of the facility has a contemporary feel. A mix of glass walls and wooden walls offset the brightly colored chairs and couches. But it's the lighting that catches the eye and illuminates all areas for the 750 students that call it home.

Architects and school planners sought to provide a full-service living and learning environment, set against the natural surroundings of the campus. Built into a hill, the main entrance brings guests into the 3rd floor lobby, and to the top of the 'Monumental Stairs'. This leads guests down to the main dining hall, classrooms and study spaces. As its name implies, the expansive staircase is the focal point and the heart of the building.

Lumistik CL642 fixtures are what gives the Monumental Stairs its wow factor. The ceiling mounted pendants form two dramatic paths down the staircase from the third floor to the first. Lumistik's LED light source is contained in an acrylic sealed cylinder that is designed to provide a uniform column of illumination. It makes an impactful design statement while providing functional light for the students moving down the staircase to the subterranean levels.



"The Lumistik luminaires make an impact even before you enter the building," said Andy Meteer, principal at Clarus Lighting, Luminis' representative and a member of the project sales team. "Placement of the fixtures ensures you can see them through the large glass windows when you come in from the driveway and parking lot. Once inside, the design called for staggering the stem lengths to adapt for the elevation changes as you descend the staircase. The goal was to ensure the luminaires are visible through the glass panes of the upper corridor."

The Lumistik CL642 pendant was also selected to light a large lounge/study area on the upper floor of the building. The tubular Lumistik fixtures work well with the bright lounge furniture to create a welcoming and communal environment. This space, too, is framed by floor-to-ceiling windows, so the luminaires are visible from the ground below. This offers a consistent lighting aesthetic when viewed from the exterior.

"This is a very large residence," said Meteer. "Beyond the aesthetics, the project required that we choose low-maintenance, energy efficient luminaires. And, of course all lighting needed to ensure the safety and security of the students."

Lumistik products are high performance LEDs that will be easy to maintain and keep energy costs in check in the long run. Lumistik CL622

pendants, which have a shorter 27" acrylic diffuser versus the 51" on the Lumistik CL642, were utilized to light one of the multi-purpose/study areas in the first floor (basement) level. The room is flanked by two walls of two-level windows, but the space is below ground, so ensuring adequate light for students to meet and work was paramount. The white translucent acrylic diffuser successfully illuminates the space to create a bright and productive environment. And mimicking the lighting intent of the Monumental Stairs, the luminaires are suspended so they are visible from the upper corridor windows.

The expansive dining hall is laid out in a series of pods to create an atmosphere that is more community and less cafeteria. Overhead lighting in an area of the hall is provided by Luminis' Aramis family. The pendants are suspended from the high industrial ceiling to a level that provides appropriate lighting to the tables below. Aramis was selected to compliment the surrounding design elements and keep a consistency in lighting throughout the basement level. This luminaire, too, is an energy-efficient high-performance LED fixture that will require minimal maintenance in the years to come.

"The feedback from this entire project has been very positive," concluded Meteer. "The space is beautiful. And the lighting creates a dramatic but inviting atmosphere in a modern, state-of-the-art facility." ■

I Bellas Artes Outpost

Manila, Philippines

Photo Credits: Zumtobel





Founded in 2013 by art patron Jam Acuzar, the Bellas Artes Projects foundation has quickly become a major art and culture centre in the province of Bataan. In 2017 Acuzar opened the Bellas Artes Outpost non-profit exhibition space in Manila, the capital city of the Philippines, to promote discourse between Filipino artists, the general public and the broader international contemporary art scene. It was early on in her career when Jam Acuzar first had the vision to create a place that makes art truly accessible to all. Her dream was to shift attention away from the collection or acquisition of art, focusing instead on artist residencies, exhibitions and education, aspiring to giving everyone the chance to experience art and culture.

With the generosity of establishing Bellas Artes Outpost in Manila, she has now built an exhibition space in which artists can present their works and experiment with the impressions and reactions generated by their exhibits. Exhibits include works by critically acclaimed artist couple Isabel and Alfredo Aquilizan, Cian Dayrit, Bruce Conner and Paul Pfeiffer, among many others.

Zumtobel has helped accentuate the modern and sometimes experimental exhibits with a flexible lighting solution that uniquely stages the works in line with the wishes of the artist.

Founder Jam Acuzar together with Claude Mark Wilson of WE Design placed great emphasis on the flexibility of the lighting solution, with the key aim of helping artists make light an effective tool for exhibitions. Lighting expert and interior designer Claude Mark Wilson opted to use the multifunctional SUPERSYSTEM II lighting tool.

The combination of a series of low-voltage tracks and a comprehensive range of easy-to-install modular LED lighting inserts covers all demanding lighting tasks and supports maximum adaptability and optimal individualisation. The slim tracks and purist luminaires, which remain very much in the background, impress with their subtle design, high-quality materialisation and outstanding brightness.



A special feature of the SUPERSYSTEM II toolbox is the ability to achieve different visual effects, depending on the particular task. The miniature spotlights are, for example, ideal for pinpoint accent lighting.

A special feature of the SUPERSYSTEM II toolbox is the ability to achieve different visual effects, depending on the particular task. The miniature spotlights are ideal for pinpoint accent lighting, incorporating rotationally symmetrical distributions such as Superspot and Wide Flood or a precise oval light beam, while the wallwasher versions provide pleasant uniform illumination for vertical surfaces.

The solution is controlled by the DIMLITE CIRCLE lighting controls unit from Zumtobel. With three scene buttons and two rocker switches for dimming, this innovative control panel looks after all the basic functions in the exhibition space and helps users avoid having to use multiple buttons and switches. ■



Exploration Center of Rivière-des-Mille-Îles Park

Quebec, Canada

Category: Exterior Lighting, Interior Lighting

Project Completion: March 2019

Photo Credits: David Boyer





The Rivière-des-Mille-Îles Park encompasses an array of natural forest, waterways, marshland and coastline in the city of Laval, Quebec. With its exceptional biodiversity, it's a unique natural attraction for the city, and welcomes over 150,000 visitors annually.

The Exploration Centre is the latest addition to the park and was built as the main visitor welcome area. The pavilion stands out with its modern and avant-garde architecture, and magnificent view of the nearby river.

Luminis' high performance Syrios LED fixtures were selected to illuminate the welcome centre both inside and out. The project's lighting designer capitalized on the Syrios family's flexible design potential, integrating a combination of exterior wall-mounted, and interior wall-mounted and pendant luminaires within the family.

The contemporary cylindrical design of the Syrios luminaires, all with a matte black finish, enhance the Exploration Centre's dramatic mix of modern and rustic, with its large wooden beams, giant windows and a grand hall. The overall architecture and lighting design are aligned with the city's strategic vision of "Urban by nature".

Energy efficiency was also a factor in the decision to use Luminis fixtures, as the building was built to the specifications of the LEED New Construction 2009 GOLD certification. The stringent process required that the Centre achieve high performance in key areas of health and the environment, including water and energy savings, recuperation of rainwater and natural ventilation.

The energy-saving features of the Syrios family successfully adhere to the strict LEED GOLD certification criteria. All luminaires are designed for performance,

reliability and durability. Each fixture features an integral LED sealed light module designed for optimal heat dissipation and lighting performance.

The exterior of the split-level pavilion is a striking mix of wood siding and large floor-to-ceiling windows. The main entrance and wraparound patio stand out with a sweeping overhang canopy of steel and wooden beams. Luminis' Syrios SY602 fixtures are mounted on the wood panels between windows; the uplight accentuates the wooden canopy above and the downlight pushes light to the surrounding visitor walkway and patio below.

Additional Syrios SY602 luminaires are installed around the perimeter of the pavilion, highlighting the facade and offering Centre employees and evening visitors a well-lit passage along a small path that hugs the building. The unique tilting mechanism in the luminaires provides full adjustability of the light module so that the light beam can be directed exactly where it is needed.

Luminis' Syrios SY600 downlight is mounted over each of the secondary doorways around the Centre's exterior. The same tilting mechanism in the fixture ensures each light beam is precisely aimed to illuminate its doorway entrance.

With the mix and match design capabilities of the Syrios family exterior and interior fixtures, the lighting scheme flows seamlessly indoors. The main floor of the centre is accessed via a vestibule which is illuminated by Syrios SY806 up/down pendants suspended from the lower ceiling. Visible from the approaching walkway, light from

the black cylinders is precisely directed to provide a safe, welcoming illumination for visitors.

Past the vestibule, the main floor of the Exploration Centre immediately opens up to the grand hall. Exposed wooden ceiling beams, a black steel drop ceiling and walls of glass overlooking the river continue to embrace the "Urban by nature" theme.

While the space benefits from significant natural light, the Syrios family of luminaires continues to play a key role in the beautiful hall. Clusters of Syrios SY306, SY606 and SY806 up/downlight pendants are suspended from the high ceilings. These particular fixtures are distinguishable by their varying diameters (3", 6" and 8"); the mix of sizes offers an interesting visual design element while illuminating the floor surface below.

Syrios SY602 interior up/downlights are featured along the vertical wall of the black steel drop ceiling; the fixture blends into its dark background, so the focus is on the illumination. The uplight showcases the high wooden ceiling and the downlight provides illumination to the floor space that separates the lower ceilings of the café, exposition hall and multipurpose room from the great room itself.

The Exploration Centre, and the park itself, is a natural jewel for the city of Laval, and its citizens will enjoy, and learn from, the protected wildlife, waterways, and islands for generations to come. Its investment in a facility that is LEED certified, including energy-efficient lighting, means minimal impact on the environment it serves to showcase and protect. ■



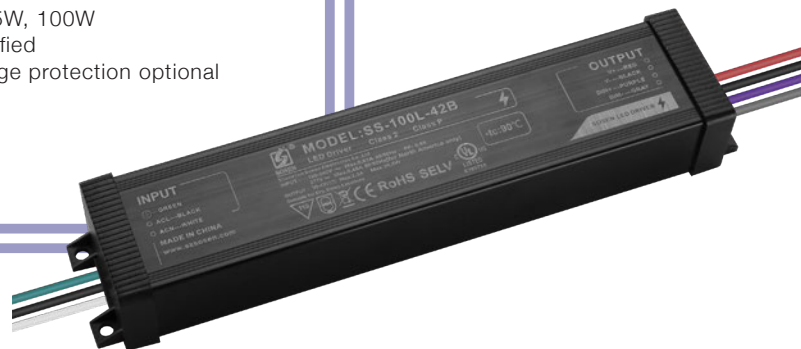
SOSEN LED Driver - Your Smart Choice

By Shenzhen SOSEN Electronics Co., Ltd
www.szsosen.com

L Series

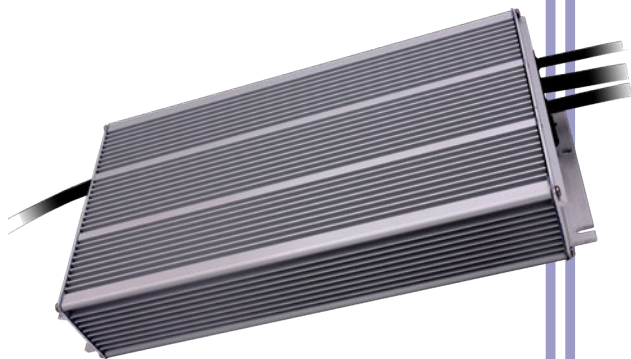
Operating from 120-277Vac, this latest innovation is not only a simple cost-effective solution for outdoor and industrial lighting, but it also offers a great solution for indoor applications including offices, public buildings, retail store, etc.

- 120-277Vac; 36W, 60W, 75W, 100W
- TUV/ UL/ CB/ Class P certified
- 6kV/4kV and 10kV/6kV surge protection optional
- 3-in-1 isolated dimming
- IP42, 5 years warranty
- Class 2



VP Series

SOSEN VP Series provides a big power range of 50-600W. It reduces cost, minimizes inventory and saves installation space. They are IP67 rated for using in more hazardous and humid applications including stadium, arena, high mast and sports lighting applications with the superior thermal management.



- 100-277Vac
- Programmable, NTC, CLO, ELA, SSA
- Isolated aux (+12V, +24V)
- 10kV/6kV surge protection
- 3-in-1 dimming/ Dali/ Dim to off
- Efficiency > 96%, THD<10%
- ENEC05/ UL/ CE certified
- SCP/ OTP/ OVP protection
- TYPE HL, suitable for hazard locations
- IP67, 7 years warranty

The Vision For The Future In Luxury Lighting Design

By Castro Lighting
www.castrolighting.com

The brand stands for classic traditions, boldly adding new design ideas: a Portuguese way of creating passion and heritage. Artistic design, daring innovative techniques, and soulful craftsmanship in every detail. Castro Lighting presents the New Designs with a perfect mix of modern and traditional styles of cutting-edge trends in Lighting Design.

In order to create a present-day smart elegance with a classical approach. Luxe finishes and selected materials along with Swarovski crystals make the unforgettable signature. All this for making an inspiring effortless luxury for contemporary living.

New Design is a fine harmony of tradition and avant-garde modernity spirit. It combines both: functional sophistication and luxurious lifestyle with a graceful touch. Castro Lighting designs for 2019 take you right to the stars.

Standing in the light of Halo Collection

Halos are optical phenomenon that occur when tiny ice crystals refract and reflect the sun or moon's light, creating splendid circles of light in the atmosphere. They are rare and prized events of delicate beauty that are simply astonishing. The Halo Suspension, made solely with brass, is a display of modern inspiration that was designed for those who want a simple and elegant lighting fixture without giving up charm and refinement. An option that is simple yet sophisticated, being the perfect addition for contemporary or modern interior designs in both residential and commercial spaces. Likewise, it isn't restrictive and will look amazing in any area of the house.



Saturn Table Lamp

In ancient mythology, Saturn was the divine father of Jupiter. In some romantic sense, metaphorically, he was considered the god of Time and Destiny. Inspired by cosmic vibes and astronomical mystery, Saturn table lamp was designed to be ambitious yet a natural spotlight in the most demanding interior design projects.

This unique lighting fixture could really be found priceless by the connoisseurs, who cherish elite and luxurious pieces. The Saturn design got many splendid traits and curves, which make it exceptional, just as Saturn's rings – the planet's most outstanding features, that can be seen only with a telescope. It is solidly made of brass rings and can be a perfect match to confident interiors of very different styles: from the present-day mid-century modern to a Hollywood glam.

Midnight Table Lamp

In order to cherish a longstanding and deep-rooted collaboration between Castro Lighting and Swarovski, the only and one of a kind specially designed Swarovski crystal was created. Dedicated to celebrating the brands' partnership, Castro Lighting developed the Midnight Table Lamp. It is set to illuminate and pay a glowing tribute to a new lease of life.

This alluring lamp is perfect for interior projects that seek pieces that reveal delicacy and luxury as a life statement. Having in mind lavish features and highly elegant and confident characteristics, the Midnight Collection reminds the seductive midnight moonlight fantasy as its lean details take a more feminine and effortlessly graceful look.

It is designed for those who stand for a desire of perfection in order to cultivate creativity and authenticity of the dazzling treasure to create the unforgettable atmosphere and compliment the interiors with this absolutely rare (master)piece.





Bauhaus Table Lamp

The Avant-garde movement, which fundamentally transformed Modern Art, was the inspiration for this Collection as its design takes us back to significant developments in Art and Design. Bauhaus Collection is designed to cherish the tremendous influence of the Bauhaus on the architecture and design of the XX and XXI centuries.

A structure framed by golden brass tubes and a wood base confer a harmonious balance to the piece. A simple yet sophisticated black lampshade conveys a luxurious and refined look that doesn't go away unnoticed.

This timeless design is the perfect decorative lamp, capable of fitting in the most demanding decors and high-end projects. The use of various materials allows this unique lighting fixture to carry you to a quiet, romantic place when light spreads through the ambience.

Manhattan Table Lamp

New York vibes, Manhattan's magical charm and free spirit that never goes out of style, led to the name of this handmade table lamp.

The geometric patterns are extremely modern, bringing a sense of refinement and style to the pieces, while selected materials grant a sophisticated and romantic look to this design. The combination of several brass tubes in its structure along with a metal plated base, represents a sleek and high-end look. These lighting fixture adds a classy touch to any kind of ambience, and easily compliments any modern styled home.



Taylor Table Lamp

Inspired by the world-famous actress Elizabeth Taylor, Taylor table lamp was designed to impress at first glance. This lighting fixture is going to blow you away... Away to the era of delicate and exquisite women's style, appropriately complemented by exclusive jewellery piece, just as the base of this breathtaking lamp, which reminds us of the lavish pearl necklace that used to grace the neck of Elizabeth Taylor.

This unique table lamp features a black lacquered structure with glossy gold-plated brass pearls, since every detail is made to draw attention. Giving the design a whole privileged and deluxe look, it sets another level by its distinctive appearance. It will elegantly fit and enrich the most stunning interior spaces, bringing every project unique and personal signature.



Skylar Suspension

This stunning glass and brass chandelier is “one in a million”.

Designed to impress, it brings a special allure and refined lighting detail to the most exquisite interiors. Artistically fulfilled lighting fixtures are made of brass with gold-plated finish, visually divided with mesmerising glass. Dazzling details give the impression of cosmic spaceship and give the unforgettable signature to this design. This suspension lamp is perfect to create an effortless luxury for contemporary living.

Clean lines with softer edges create a streamlined silhouette and robust forms, which reveal a natural balance between traditional and futuristic vision in lighting design. This Collection allows you to live your dream in the moment of deepest passion.



Flute Suspension

Inspired by a landmark and natural wonder – the Reed Flute Cave, also known as “the Palace of Natural Arts”, Flute suspension lamp got its vigorous name from the associated natural limestone cave with multi-coloured lighting, that splits through rocks to glow in the dark. This handmade lighting fixture is made of gold-plated brass coupled with solid tubes, hammered by the hands of experienced craftsmen, it is capable of transforming any space into the adventurous and audacious scenery. The extended tubes remind dangling stalactite and stalagmite shapes.

This design is a perfect addition to complement the hotel lobby furniture, fitting in a vast variety of decors. Fundamentally, simplicity, smooth texture, and clean lines, help define this contemporary décor style, being this piece ideal to fit this type of interiors.

Crystalline Suspension

The Crystalline handmade suspension is transparent but graceful. This modern suspension lighting cherishes modesty, just as Modern design itself cultivates a sense of simplicity in every element, avoiding clutter or accessories involved. Having this concept in mind, the Crystalline lighting fixture was created. Round brass forms with very clean sophisticated lines are the base of this suspension lamp. Hanging crystals added to the bottom of the pieces, turn them into elite luxurious statement, and bring that desirable pure feeling. The Crystalline design has falling raindrops effect made with Swarovski clear crystals that shape the round “bell-flower”, slightly flattened structure.

With a delicate though divine look, Crystalline is the ideal decorative lighting statement that, because of the outstanding sparkle of the crystals, is so exceptional, mystical and timeless. It can be the perfect feature to any type of modern interior décor.





Arcade Suspension

In order to pay tribute to the associated trendy game machine, inspired by the so popular, back in the day, Arcade game, Castro Lighting's created this fascinating handmade suspension lamp.

Gold-plated brass masterfully combined with mesmerising glass provide an aerial atmosphere, full of bright and playful shooting amber rays of light. Opulent lighting fixtures bring sensuality and a state of tender contemplative attitude, generosity and openness. This soft light piece transmits class and purity to every space. It is a perfect match to different type of interiors: either classic, or modern.

Avany Pendant

Avany handmade pendant features long plated brass tubes in both rectangular and circular shapes, the mix of black nickel mate and gold finish, give the design a whole exclusive and charming look, setting another level by its distinctive appearance.

A unique pendant that combines both: functional sophistication and luxurious lifestyle with a graceful futuristic touch. Ideal for contemporary style or modern interior design in both residential or commercial spaces, it will greatly complement the living room or bedroom lighting.



Avany Floor Lamp

Avany handmade floor lamp features long plated brass tubes in both rectangular and circular shapes, the mix of black nickel mate and gold finish, give the design a whole exclusive and charming look, setting another level by its distinctive appearance.

Artistic design and daring innovative techniques make the unforgettable signature. This floor lighting fixture reveals a very own creative vision in lighting aesthetics: authenticity, freshness, and boldness.

A unique floor lamp that combines both functional sophistication and luxurious lifestyle with a graceful futuristic touch. Ideal for contemporary style or modern interior design in both residential or commercial spaces, it will greatly complement the living room or bedroom lighting.



About Castro Lighting

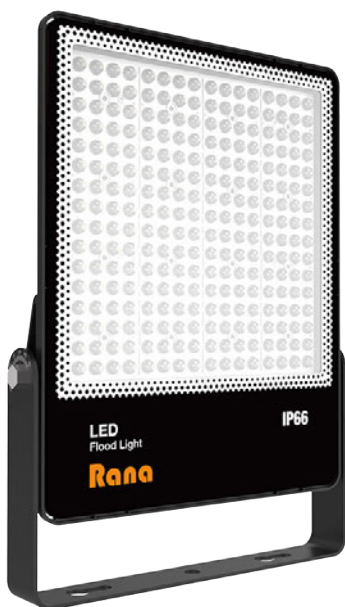
40 years of accomplishments that manifest refinement every day, expressed in the commitment to never leave the roots and traditions while implementing innovative techniques. Driven by a pioneering spirit since 1978, the long history of Castro Lighting began with the desire to distribute lighting solutions around the world.

The passion for design naturally grew within, as inspiration came from exciting trips and personal experiences of Mr. Modesto Castro. It took numerous discoveries to assemble the necessary skills and courage to gain ground and create a brand with such a strong character as Castro Lighting. With the perfect combination of ethics, motivation, hard-work and passion for industrial design, as well as a fascinating journey of discovery, Castro Lighting became internationally known.

All You Need For Satisfying Outdoor Lighting

By YAHAM Optoelectronics Co., Ltd
www.yahamlighting.com

Photo Credits: YAHAM Lighting



RANA LED Flood Light

Rana features as a cost-effective and versatile floodlighting solution. Ranging from 10W to 240W, featuring with 9 beam angles and integrated with various functions, Rana can always be your better choice for almost all lighting scenes, including playgrounds, parking lots, streets, billboards, etc.

- » 130lm/W
- » 10W/20W/30W/70W/100W/150W/200W/240W
- » 9 beam angles optional to optimize application efficiency: 120°/ 90°/ 60°/ 40°x110°/ 100°x160°/ Type II/ Type III/Type IV/Type V
- » Integral with 4KV SPD
- » Advanced Graphene technology
- » IP66 Waterproof and Dustproof
- » CB CE DLC ETL SAA approval
- » Versatile flood light for almost all scenes, super cost-effective

LUMIWAY 3 LED Flood Light

Energy-effective, elegant-shaped, and corrosion-proof, Lumiway 3 is a perfect combination of high performance and excellent adaptability. Always keep Lumiway 3 in mind for your area, sports field and facade lighting projects.

- » 140lm/W
- » 100W/150W/200W/300W
- » Beam angle: 60°x90° / 30°
- » Passed salt spray test, perfectly apply to harsh environments
- » IP66 Waterproof and Dustproof
- » CE, ETL, DLC Approval
- » Beautiful, durable and energy-effective floodlighting solution





TRI LED Area Light

TRi LED Area Light is a born area and street lighting solution. Featuring with aesthetic pleasing cobra-head design, 140lm/W high efficacy, and 7 distribution patterns, TRi can be widely used to parking lots, plazas, sports courts, and streets.

- » 140lm/W
- » 60W/100W/150W/200W/300W
- » Beam angles: 40°/60°/90°/120°/160°/70°×150°/ 50°×130°
- » Aesthetic pleasing cobra-head shaped
- » Efficiently avoid backlight and light pollution
- » IP66 Waterproof and Dustproof
- » CB, CE, SAA , ETL, DLC Approval
- » Born for Street and Area Lighting

SHOEBOX LED Area Light

Shoebox is specially designed for tennis court and parking lot lighting. 3 professional beam angles are developed to achieve the best lighting performance and optimize application efficiency. Consider shoebox and make your lighting better.

- » 130lm/W
- » 120W/150W/200W/300W/400W/500W/600W
- » Beam angles: 80°×150°/110°×150°/55°×110°
- » Advanced beam angles to optimize application efficiency
- » Various mounting methods optional to fit every possible applications
- » IP66 Waterproof and Dustproof
- » CB, CE, SAA , ETL, DLC Approval
- » Specially designed for tennis court and parking lot lighting



COMPACT S LED Flood Light

Compact S is specially designed for jobsite lighting. With compact size and simple installation, it is very easy to attach Compact S to Mobile Light Towers and Cranes. DC24V and AC100-277V working voltages are optional, so users can choose the proper one according to their power conditions.

- » 140lm/W
- » 200W/240W
- » Beam angles: 60°/30°/20°
- » Working voltage: DC 24V or AC100-277V optional
- » Advanced beam angles to optimize application efficiency
- » Various mounting methods optional to fit every possible applications
- » IP66 Waterproof and Dustproof
- » CB, CE, SAA , ETL, DLC Approval
- » Jobsite lighting made easy! Perfectly apply to various construction and disaster relief sites





LUMIWAY 3 LED HIGH MAST LIGHT

By YAHAM Optoelectronics Co., Ltd
www.yahamlighting.com

Lumiway 3 combines supreme performance with cost efficiency perfectly. Up to 1200W, corrosion-proof, super durable, and highly energy efficient, Lumiway 3 is a born luminaire for large areas and high mounting height to secure safety, enhance visibility and enable remarkable energy saving.

Having passed salt spray test, Lumiway 3 is particularly suitable for seaport lighting. It has already finished many successful seaport lighting projects in USA., Spain, Indonesia, Thailand, Vietnam, etc., and more projects are to come.

Whether you are operating new constructions or replacement projects, Lumiway 3 is here ready to impress your customers.



GONZAGA

By Karman
www.ingo-maurer.com

The creation of the new Karman pendant lamp, Gonzaga by Luca De Bona, Dario De Meo and Matteo Ugolini was inspired by the history and iconography of the Renaissance period. Inspired by the portraits of princes and dukes, Gonzaga consists of a pleated metal shade that surrounds a diffuser in blown glass and a LED light source, creating a lamp that seems to take its minimalist geometry on a dance through space, using the dramatic dynamism created with light and shadow that seem to endlessly chase after one another.

BELGRAVE CARRIAGE LIGHT

By Garden Trading
www.gardentrading.co.uk

Taking its name inspiration from a grand road in London, the Belgrave Carriage Light pays homage to classic Victorian style lanterns. The Powder Coated Steel frame and arm have been finished in our Carbon colourway, an off-black with a hint of blue, that would complement a range of home exteriors.





OGLE COLLECTION

By ateljé Lyktan
www.atelje-lyktan.se/en

Swedish lighting powerhouse ateljé Lyktan has launched the Ogle and Ogle Mini collection designed in collaboration with internationally acclaimed industrial design studio Form Us with Love. Ogle is available as a pendant, track spotlight, wall, table, and floor light - perfect on its own as well as in a cluster.

Measuring 90 mm diameter and 150 mm in diameter, the luminaire housing is made from die cast aluminium for durability, and offers a near infinite range of adjustability, allowing the Ogle to illuminate spaces with technical spotlight characteristics.

Available in ten colourways: champagne, power pink, salmon pink, turquoise, petrol blue, power purple, anthracite green, powder green, black and white. Ogle is available exclusively in Asia at Technolite.



OOP'S 2

By Ingo Maurer
www.ingo-maurer.com

The Art of the Curve
The small wall lamp "OOP'S 2" is an "eye-catcher" with its particular sweeping twist and its clearly focused light. The handcrafted curved shade is positioned along the wall and captivates with its playful elegance. The filigree paper lamp can be attached to the wall in a few simple steps. The concealed illumination can easily be replaced by the user. Thanks to its versatility, it can be used in private environments, but also in areas designed for calming which have become an important part of the modern working environment.

OOP'SALA

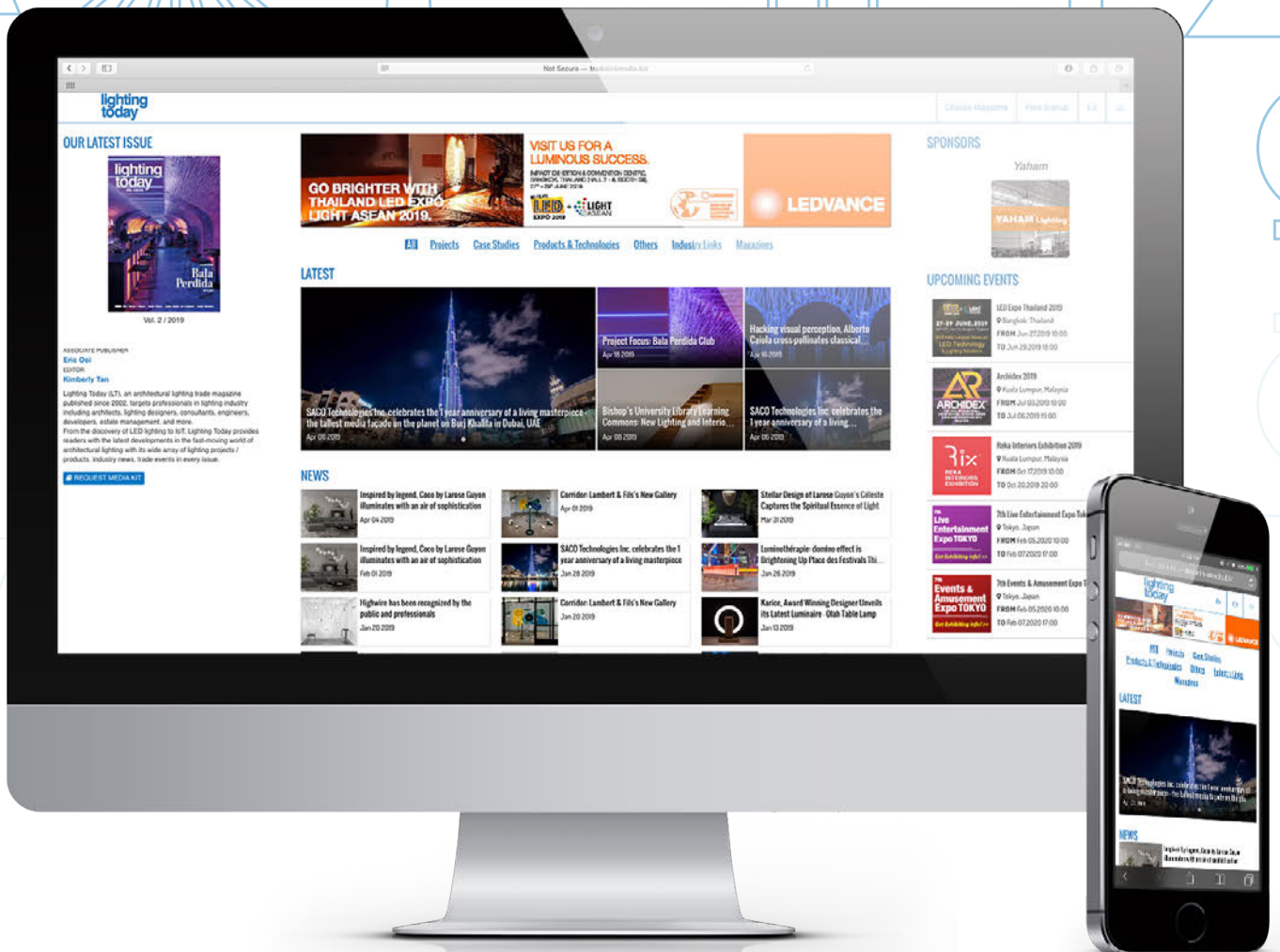
By Ingo Maurer
www.ingo-maurer.com

Sculptural Beauty

The "OOP'Sala" is elegant and impressive. The two interconnected narrow aluminium strips wind their way from the ceiling and unfold at their lower end in a striking arc of tension. The sheet metal was bent by hand, by design of Ingo Maurer in a sheet metal workshop near Munich. A unique feature of this light configuration in this system is that it does not illuminate the centre of the table, but the outer area in which the plates are located. The unique combination of light source, design language and materiality lends the "OOP'Sala" truly special aesthetics.



OUR WEBSITE HAS A FRESH NEW LOOK.





Subscription Form

Fax your order today
+65 6842 2581

(Please tick in the boxes)

Southeast Asia Building

SEAB
SINCE 1974

1 year (6 issues)

Singapore	S\$45.00
Malaysia / Brunei	S\$90.00
Asia	S\$140.00
America, Europe	S\$170.00
Japan, Australia, New Zealand	S\$170.00
Middle East	S\$170.00

Bathroom + Kitchen Today

bathroom+kitchen
SINCE 2001

1 year (4 issues)

Singapore	S\$32.00
Malaysia / Brunei	S\$65.00
Asia	S\$80.00
America, Europe	S\$130.00
Japan, Australia, New Zealand	S\$130.00
Middle East	S\$130.00

Southeast Asia Construction

CONSTRUCTION
SINCE 1994

1 year (6 issues)

Singapore	S\$45.00
Malaysia / Brunei	S\$90.00
Asia	S\$140.00
America, Europe	S\$170.00
Japan, Australia, New Zealand	S\$170.00
Middle East	S\$170.00

Lighting Today

lighting today
SINCE 2002

1 year (4 issues)

Singapore	S\$32.00
Malaysia / Brunei	S\$65.00
Asia	S\$80.00
America, Europe	S\$130.00
Japan, Australia, New Zealand	S\$130.00
Middle East	S\$130.00

Security Solutions Today

Security Solutions Today
SINCE 1992

1 year (6 issues)

Singapore	S\$45.00
Malaysia / Brunei	S\$90.00
Asia	S\$140.00
America, Europe	S\$170.00
Japan, Australia, New Zealand	S\$170.00
Middle East	S\$170.00

IMPORTANT

Please commence my subscription in _____ (month/year)

Personal Particulars

NAME: _____

POSITION: _____

COMPANY: _____

ADDRESS: _____

TEL: _____ FAX: _____

E-MAIL: _____

Professionals (choose one):

- Architect
 Landscape Architect
 Interior Designer
 Developer/Owner
 Property Manager
 Manufacturer/Supplier
 Engineer
 Others

I am sending a cheque/bank draft payable to:
Trade Link Media Pte Ltd, 101 Lorong 23, Geylang, #06-04, Prosper House, Singapore 388399
 RCB Registration no: 199204277K * GST inclusive (GST Reg. No: M2-0108708-2)

Please charge my credit card (circle one): Amex / Diner's Club

Card Number: _____ Expiry Date: _____

Name of Card Holder: _____ Signature: _____

Events & Expositions 2019/20 + Advertisers Index

September 2019

IBEW - INTERNATIONAL BUILT ENVIRONMENT WEEK 7

September 3 – 6

Sands Expo & Convention Centre
Singapore

Email: ibew@reedexpo.com.sg

Website: <http://eservices.bca.gov.sg/IBEW/>

CAMBUILD 2019 13

September 18 – 20

Diamond Island Convention and Exhibition Centre
Phnom Penh, Cambodia

Email: kim@ambtarsus.com

Website: www.cambuildexpo.com

October 2019

LIGHT ASIA 2019 11

October 1 – 3

Halls B & C, Sands Expo & Convention Centre
Singapore

Email: LLA@cems.com.sg

Website: www.ledlightasia.com.sg

RIX - REKA INTERIORS EXHIBITION 9

October 17 – 20

Kuala Lumpur Convention Centre
Kuala Lumpur, Malaysia

Email: info@rixmalaysia.com

Website: www.rixmalaysia.com

November 2019

MYANBUILD 2019 15

November 21 – 23

Myanmar Event Park (MEP) at Mindama
Yangon, Myanmar

Email: darren@ambtarsus.com

Website: www.myanbuild.net

February 2020

7TH LIVE ENTERTAINMENT EXPO TOKYO 3

February 5 – 7

Makuhari Messe
Chiba, Japan

Email: live-expo.eng@reedexpo.co.jp

Website: www.live-event.jp

**PLATINUM
PARTNER**

lighting
today

Lighting & Equipment
Public Company Limited

📍 Thailand

☎ +66 2248 8133

✉ cco01@lighting.co.th

🌐 www.lighting.co.th

📖 IFC

**GOLD
PARTNERS**

lighting
today

LEDVANCE Pte Ltd

📍 Singapore

☎ +65 6375 4078

✉ enquiry.asean@ledvance.com

🌐 www.ledvance.asia

📖 OBC

Shenzhen SOSEN Electronics Co., Ltd

📍 China

☎ +86 755 2315 0729

✉ info@szsosen.com

🌐 www.szsosen.com

📖 5

Yaham Optoelectronic Co., Ltd

📍 China

☎ +86 755 2950 3560

✉ sales@yahamlighting.com

🌐 www.yahamlighting.com

📖 1

Our tribute to Lighting...



TradeCards Global mobile application is offering **50% discount** for one-year organisation listing to suppliers and service providers that serve our Lighting Community. With the reduced price of USD500 / *SGD700 for one-year organisation listing, suppliers and service providers get to enjoy an **additional 10MB of product listing** tagged to your organisation listing.

Visit www.tradecardsglobal.com to sign up for a new account and your organisation listing. Input "**LIGHTRIBUTE**" as promo code before proceeding to payment page. The promo code is valid until 31 December 2019.

*Rate excludes 7% GST applicable for Singapore-registered companies

TRADECARDS
GLOBAL

Supporting mobile version of:

SEAB
SOUTHEAST ASIAN BUILDING

SOUTHEAST ASIAN
CONSTRUCTION

Security
Solutions Today

bathroom
+kitchen

lighting
today



GET IT ON
Google Play



Download on the
App Store



BETTER LIGHT FOR BETTER LIFE. HUMAN CENTRIC LIGHTING.

A BETTER WAY OF LIGHTING FOR HUMANS.

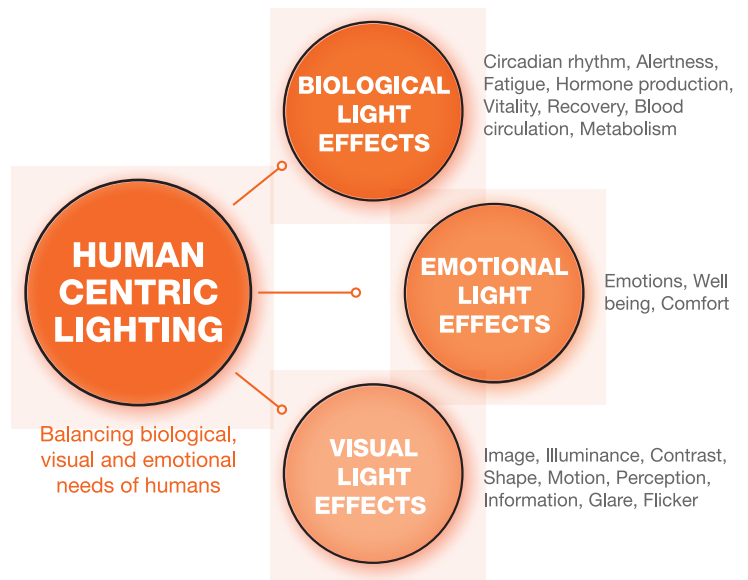
Light is a regulator for our “internal clock”. It has a direct or indirect influence on important hormones that will affect various things – blood pressure, heart rate, vitality, memory and mood. With the right light at the right time, we’re able to be active during the day and relax at night.

Human Centric Lighting (HCL) is a lighting system tailored to the needs of the human body that automatically stimulates the changes in natural daylight as closely as possible.

LEDVANCE offers easy-to-use lighting solution as the centre of human benefit and well-being. We aim to provide quality and healthy light without blue light hazard, flickering free & low glare. Each new addition of our portfolio is created with human health in mind, to support concentration and for a quality life.

For more enquiries, email us at enquiry.asean@ledvance.com

Source: <https://hcl.ledvance.com/what-is-human-centric-lighting/index.jsp>



On a sunny day
100,000 lux



On a clouded day
10,000 lux



In offices
500 lux



In schools
300 lux



People spend indoor
90% of their time

BRILLIANT INNOVATIONS FOR HUMANS.



LED DOWNLIGHT PRO

- Luminous efficacy: Up to 120 lm/W.
- Luminous flux: 900, 1,300, 1,600, 2,000, 2,500 & 4,000 lm.
- Antiglare Luminaire with UGR<19.



LED T5 BATTEN

- Luminous efficacy: Up to 80 lm/W.
- Luminous flux: 270, 300, 540, 600, 810, 900, 1,000, 1,080 & 1,200 lm.
- Uniform illumination & mercury free.



LED ECO BACKLIT PANEL

- Luminous efficacy: Up to 80 lm/W.
- Luminous flux: 2,880 lm.
- Uniform light distribution & flicker free driver.